

20
22

OCTOBER
26-27, 2022

Maui

Forum

PRESENTED BY



THE QUEEN'S
HEALTH SYSTEM

Agenda

THURSDAY, OCTOBER 27, 2022

7:30–8:30 A.M.	REGISTRATION, NETWORKING & CONTINENTAL BREAKFAST	CORAL LOUNGE
8:30–9:45 A.M.	OPENING GENERAL SESSION: OPENING REMARKS & KEYNOTE ADDRESS Keynote Speaker: Sarah Phelps, Director of Astronaut and Customer Experience, Blue Origin	CORAL BALLROOMS III-V
10:00–11:00 A.M.	MORNING SESSIONS I: <ul style="list-style-type: none"> • LETTING GO TO GROW • ARE YOU “CLIMBING” OR “NAVIGATING” YOUR CAREER? • BUILDING A STRONGER COMMUNITY STARTS WITH YOU! • SITTING AT THE EXECUTIVE TABLE 	CORAL BALLROOM I CORAL BALLROOM II SOUTH PACIFIC I-II SOUTH PACIFIC III-IV
11:15 A.M. – 12:15 P.M.	MORNING SESSIONS II: <ul style="list-style-type: none"> • CONTENT IS QUEEN • THE GLASS CEILING IS BROKEN, NOW WHAT? • THRIVE IN THE FOURTH TRIMESTER • DISRUPT YOUR FEED 	CORAL BALLROOM I CORAL BALLROOM II SOUTH PACIFIC I-II SOUTH PACIFIC III-IV
12:30–1:30 P.M.	NETWORKING LUNCH & EXPO <ul style="list-style-type: none"> • NETWORKING LUNCH • NETWORKING EXPO 	CORAL BALLROOMS III-V CORAL LOUNGE
1:30–2:30 P.M.	AFTERNOON SESSIONS: <ul style="list-style-type: none"> • PARTICIPATION AND POWER IN NEGOTIATIONS • CAREER TRANSITIONS: TRIALS, TRIBULATIONS AND LESSONS LEARNED • WHY DIVERSITY, EQUITY AND INCLUSION MATTERS IN HAWAII • UNLEASHING THE ECONOMIC POWER OF WOMEN 	CORAL BALLROOM I CORAL BALLROOM II SOUTH PACIFIC I-II SOUTH PACIFIC III-IV
2:45–4:00 P.M.	CLOSING GENERAL SESSION <ul style="list-style-type: none"> • STRENGTH AND PERSEVERANCE: 50 YEARS OF TITLE IX Jill Leilani Nunokawa, Former Rainbow Wahine Basketball Player & Civil Rights Specialist Clarissa Chun, Head Coach, Women's Wrestling, University of Iowa Nicole Isa-Iijima, Civil Rights Compliance Specialist, State of Hawai'i Department of Education Moderator: Steve Petranik, Editor, <i>Hawaii Business Magazine</i> 	CORAL BALLROOMS III-V

Map

10:00 A.M.

10:00 A.M.

11:15 A.M.

1:30 P.M.

PARKING VALIDATION

7:30-8:30 A.M.

7:30 A.M.-4:00 P.M.


Expo & Networking

10:00 A.M.

1:30 P.M.

KEY:

(PS) – Parking Pay Station

 – Restroom

10:00 A.M.

Sitting at the Executive Table

11:15 A.M.

Disrupt Your Feed

1:30 P.M.
Unleashing the Economic
Power of Women

10:00 A.M.

Building a Stronger
Community Starts with YOU!

11:15 A.M.

Thrive in the Fourth Trimester
1:30 P.M.

Why Diversity, Equity and Inclusion Matters in Hawai'i

10:00 A.M.

Letting Go to Grow

11:15 A.M.
Content is Queen

1:30 P.M.
Participation and Power in
Negotiations

8:30 A.M.

Opening General Session:
Keynote Speaker: Sarah Phelps

12:30 P.M.
Networking Lunch

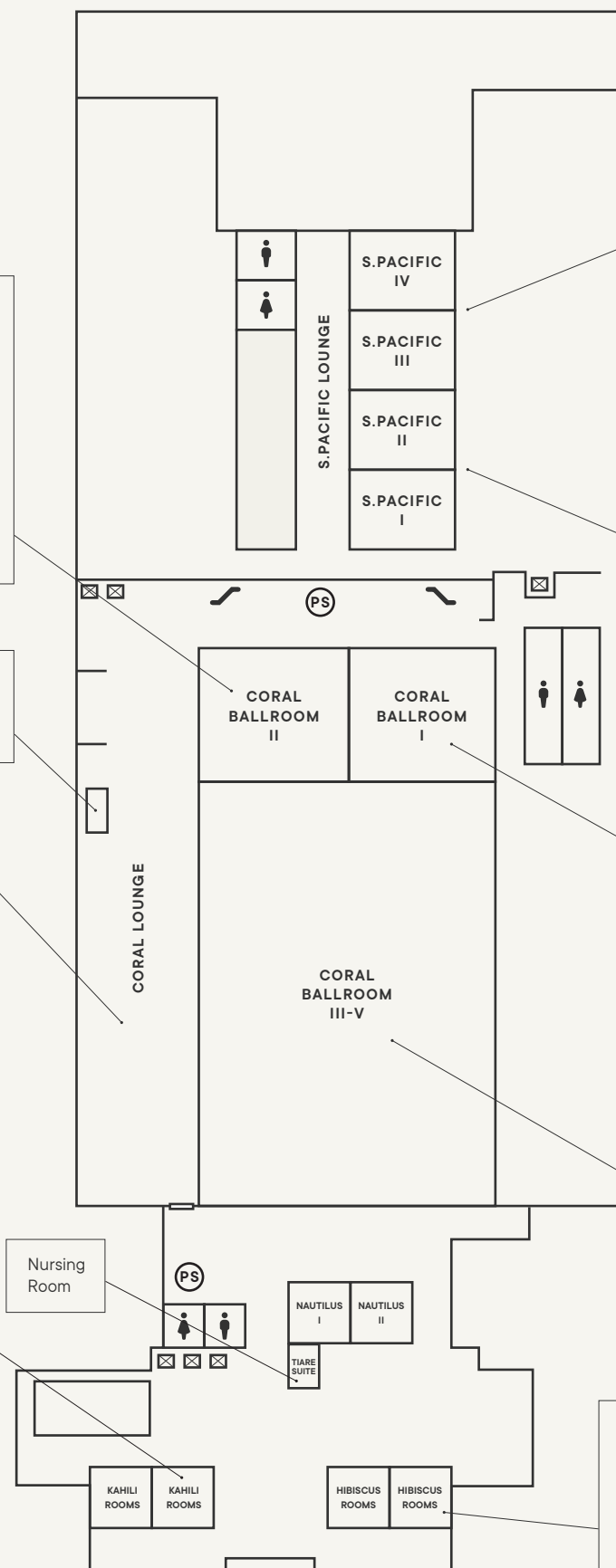
2:45 P.M.
Closing General Session:
Strength and Perseverance:
50 Years of Title IX

10:00 A.M.

Networking with Intention and Tenacity

11:15 A.M.
Special Leadership Alliance Session

1:30 P.M.
Networking with Intention and Tenacity



LETTER FROM OUR PUBLISHER



HawaiiBusiness
magazine

Fifteen years for the Wahine Forum!

We are thrilled to celebrate this important milestone with all of you. A friend recently told me she brought her 15-year-old daughter to the first Forum and that daughter now has a successful career and daughters of her own. It is meaningful to reflect on the Forum's evolution over the years and its positive impact on so many women.

The Wahine Forum was originally called HerStory and created by women leaders at the Junior League of Honolulu. Over the first few years a partnership was formed with *Hawaii Business Magazine* and the Wahine Forum was born.

One of those women – Barbra An Pleadwell – was a force in our community and a strong women's advocate. She served on many boards and won many awards. Barbra was deservedly in *Hawaii Business Magazine's* very first "20 For the Next 20" cohort in 2007.

Far too early, Barbra passed away on March 22, 2021. We thank and honor Barbra for providing the foundation for the Wahine Forum among so many other positive contributions to our community.

There are many other people and businesses who have supported the Forum over the years and helped craft its evolution into the largest professional development event in Hawai'i. Our presenting sponsor, The Queen's Health System, has been with *Hawaii Business* from the beginning and we would not be able to provide you with this incredible day of learning and connection without them.

We are also grateful to La Pietra Hawai'i School for Girls, the YWCA of O'ahu and First Hawaiian Bank for their partnerships over the years. Thank you to them and other important sponsors whose generosity make this conference possible; we encourage you to read their messages in this program.

Our theme this year is "*Limitless*" – exactly how we feel about being together in person after two years of virtual forums. This program describes almost 60 speakers and panelists who are giving generously today of their time, knowledge and inspiration, including keynote speakers whose careers are all about pushing through limits.

Thank you from the entire *Hawaii Business Magazine* team for joining us today. We take our inspiration from all of you.

Mahalo piha,

A handwritten signature in black ink that reads "Cheryl Oncea".

Cheryl Oncea
Publisher, *Hawaii Business Magazine*

LETTER FROM OUR PRESENTING SPONSOR



**THE QUEEN'S
HEALTH SYSTEM**
Your Lifetime Partner in Health

HAWAI'I
KAUAI
MAUI
MOLOKAI
O'AHU

The Queen's Health System is incredibly proud to support the Wahine Forum, a unique community event that brings together dynamic and innovative women from diverse backgrounds to share inspirational stories about their journey to success. We are truly honored to serve as the Presenting Sponsor for the 13th consecutive year, and are thrilled that the event is returning to an in-person format.

Each day at Queen's, we are guided by the shining example that was set more than 160 years ago by a courageous and compassionate female leader – our hospital's foundress, Queen Emma. Over the last few years, as we faced the COVID-19 pandemic, our dedicated caregivers have remained steadfast in the Queen's mission to provide quality health care services to improve the well-being of Native Hawaiians and all the people of Hawai'i.

At this year's Wahine Forum, I know we will be inspired by other outstanding women. This event holds a special place in my heart, as it was among the first ones I attended after I became a part of the Queen's 'ohana in 2019. I remember walking away feeling energized with new ideas and lifelong connections.

Queen's longtime sponsorship of the Wahine Forum is quite meaningful for us, as more than 70% of our workforce of 8,000+ caregivers are women. Many are participating in this event. We hope you'll join us for our breakout session titled *Building a Stronger Community Starts with YOU!* Please also stop by our exhibit tables in the expo area where you'll find valuable information from our Women's Health, Integrative Wellness, and Heart teams.

Mahalo to *Hawaii Business Magazine* and our valued partners for supporting this wonderful gathering of wahine business and community leaders in Hawai'i.

With warm aloha,

A handwritten signature in black ink, reading "Jill Hoggard Green".

Jill Hoggard Green, PhD, RN
President & CEO
The Queen's Health System

LETTER FROM OUR SPECIAL PARTNER



Aloha,

As an organization committed to the advancement of girls and women, La Pietra - Hawai'i School for Girls is proud to continue its association with *Hawaii Business Magazine* as a special partner of the 2022 Wahine Forum. Through the years, the Forum has provided countless opportunities for our students to learn, meet outstanding role models, and grow, all of which are values that are important to our school as well.

Please do drop by our table to say hello to our students – they will someday be in positions like yours and an opportunity to interact with working professionals can have a powerful influence on them as they think about their future. If you do have a chance to chat with them, you will see why they make us so proud.

We hope you have a productive and enjoyable conference. Thank you for coming, and thank you for the fine example you set for our future leaders. Through the inspiring stories shared, the professional networking, and the collaborative vision of mana wahine building a better world, our students will see that their future is truly limitless.

Mahalo nui loa,



Josh Watson
Head of School
La Pietra – Hawai'i School for Girls

LETTER FROM OUR SPECIAL PARTNER



eliminating racism
empowering women
ywca
O'ahu

PATSY T. MINK
CENTER FOR
BUSINESS &
LEADERSHIP

Aloha everyone,

We are glad that you are joining us at the 2022 Wahine Forum, Hawai'i's largest leadership and career development conference for women.

We are grateful to return to this special event as a nonprofit partner. With our mission of eliminating racism and empowering women, it is hard not to be part of this conference which brings incredible opportunities for women to advance their skills and knowledge so that they can continue to succeed in their chosen fields. The conference is also a great place to meet up with professional colleagues. Our kudos to the HB management and staff to keep growing the forum and bringing back to our community.

Each year, the conference brings timely and thought-provoking sessions to help us become stronger professionals. This year's theme *LIMITLESS* seems so fitting for us as we continue to push back limits in our lives as women: from income potential to opportunities for promotion and advancement. The sky certainly is the limit and we can pursue anything we want to, but women in this country continue to face numerous situations where external factors can pose limits on how far we can go.

Should we let others set limits on where we go or how far we can go with our career ambitions and anything else in life?

I think we all know the answer to that question.

Let's not create limits for ourselves and let's not buy into any limits created for us by others.

We are limitless.

I hope today will be a great reminder for you to realize how much potential you have. You are in great company with all those women (and some supportive men!) who believe in you and want to see you succeed.

Enjoy the conference!

Noriko Namiki
CEO, YWCA O'ahu

LETTER FROM OUR EXCLUSIVE BANKING PARTNER



First Hawaiian Bank®

Aloha!

First Hawaiian Bank is proud to once again be the exclusive banking partner for the Wahine Forum. After a two-year hiatus, we are excited for the return of an in-person format, allowing for a greater opportunity to connect with some of the most remarkable women leaders across all industries in our community.

Women represent 64 percent of the workforce at First Hawaiian Bank, in addition, 56 percent of our management positions are held by female leaders. While there has been progress with women leading many Hawai'i businesses, we're excited to support all female employees rise in their careers, no matter the industry.

Thank you for spending time with us today. We hope this forum will inspire and empower you to great success in your personal and professional growth.

A handwritten signature in black ink that reads "Bob Harrison".

Bob Harrison
Chairman, President and Chief Executive Officer, First Hawaiian Bank

LETTER FROM OUR GOLD SPONSORS



We proudly support the Wahine Forum, as we strive to create an airline people love by celebrating the communities we serve. People are at the heart of our business, and our company's established foundation of diversity and inclusion allows us to attract superior talent, and to better understand the needs of our guests.

We believe that championing a culture of diversity and inclusion starts from the top. 30 percent of our officers across the company are women. Additionally, 50 percent of our board members are women – we're the only airline and the first Fortune 500 company on the West Coast to achieve this. From the flight deck to the cubicle, 56 percent of our employees across Alaska Air Group identify as female.

By making diversity and inclusion central to the way our company works, we create an atmosphere of learning and continuous improvement to increase productivity and maintain an environment of innovation and creativity.



ALOHACARE Aloha,

I am once again inspired and humbled by the wahine at this forum. As wahine, we use our collective wisdom as mothers, daughters and sisters to see things differently. And that insight can lead to powerful change.

Like many of you, we believe it is our kuleana, our responsibility, to create a healthier Hawaii. That's why our AlohaCare Imua Loa Community Giving Program supports initiatives that help people wherever they are—whether it's funding mobile medical services for low-income moms and babies or telehealth and digital access for patients in rural areas.

As wahine, we see. We act. To all the powerful wahine reading this, I hope that this year's forum will inspire, energize and empower you as we get to work – for our families, colleagues and community.

Mahalo,
Francoise Culley-Trotman, Chief Executive Officer



A FINN Partners Company

It is an honor for Anthology Marketing Group to be a sponsor of the 15th annual Wahine Forum. Thank you to *Hawaii Business* team for the remarkable job you do in putting together this world-class conference.

Like all attendees and participants, the Anthology team looks forward to the gathering and the chance to feel empowered, inspired, and challenged. The energy generated, careers rejuvenated, and connections made make Wahine Forum much more than just a conference.

Anthology's goal is to provide best in class marketing services for Hawai'i and the Pacific Region. As part of FINN Partners, our values-driven culture focuses on integrity, collaboration, and innovation. Support and participation in the Wahine Forum help us achieve our goals.

Mahalo to the *Hawaii Business* team for this opportunity.
Mary Fastenau, Senior Partner

LETTER FROM OUR GOLD SPONSORS



“Leadership is about making others better as a result of your presence and making sure that impact lasts in your absence” (Sheryl Sandberg). I don’t think there’s a better quote that sums up Hawai‘i’s female leaders whom we have the honor of celebrating at this year’s Wahine Forum. Because of them, future generations will have the opportunity to learn from strong mentors who pave the way for their success. At Atlas Insurance Agency, having a female-dominant leadership team has improved our ability to bring forward diversity of ideas, provide excellent mentors for the rest of our team, and build the foundation of trust our clients depend on. We would not have the success we do today without them. My heartfelt thanks to *Hawaii Business Magazine* for creating such a meaningful event that highlights the strong wahine leaders in our community. To the panelists and moderators – a warm ma-halo and congratulations, we look forward to learning from you.

Chason Ishii, President, Atlas Insurance Agency



Big Island Candies is honored once again to support the Wahine Forum. When Big Island Candies was established in 1977, it was born from humble beginnings in a small warehouse in Hilo’s industrial area, with only a chocolate melter and a shrink wrap machine. Turns out, we also had these important ingredients for the recipe for success: pride, perseverance, and a group of intelligent, inspiring people to help us get to where Big Island Candies has grown to today.

As we near our 45th anniversary, the passion for producing a variety of high-quality products, with that same pride and perseverance by our family of dedicated employees, is still paramount. And all along the way, it’s been our pleasure to be able to connect with, and build a community of, amazingly loyal and supportive customers.

This is one of the reasons why the Wahine Forum resonates so strongly with us—it’s an invaluable opportunity to connect, and build community. To all who are attending this year’s conference: The possibilities for success are indeed—limitless.

Sherrie Ann E. Holi
President and Chief Operating Officer, Big Island Candies



Aloha,

As our 4th year sponsoring this inspiring event, Hawaii Dental Service (HDS) is excited to join you all in-person at the 2022 *Hawaii Business* Wahine Forum. HDS fundamentally believes that the resilience of women – both personally and professionally – speaks to our adaptability during these times of upheaval and the potency of our passion and intellect births possibilities the world needs. Our personal mo’olelo (stories) and lived experiences are unique – from mothers and caretakers to educators and entrepreneurs – making all the ways to be a mana wahine, *LIMITLESS*.

Throughout the sessions today, share freely and allow yourself to find inspiration, connection, rejuvenation, and empowerment for your own careers and journeys. As mana wahine, there are two ways to spread light – be the sun, or the moon that reflects it – but only by reclaiming your power and being your truest self can you help all you encounter to *live well, smile more*.

Mahalo,
Dr. Diane S.L. Paloma, President & CEO, Hawaii Dental Service.

LETTER FROM OUR GOLD SPONSORS



Aloha,

After more than two years of virtual gatherings, HMSA is excited to support Wahine Forum 2022 and the opportunity it provides for women across the state to reconnect face-to-face, collaborate, and learn from each other.

Hawai'i has a rich history of acknowledging women's abilities to lead. More than 100 years before the United States appointed Sandra Day O'Connor as the first female Supreme Court Justice, the Kingdom of Hawai'i seated Miriam Kekāuluohi to its Supreme Court. Today, HMSA maintains that tradition with women in the majority of leadership positions in our organization.

Mahalo to *Hawaii Business Magazine* for hosting this event. We're proud to be a part of the Wahine Forum and grateful for this opportunity to improve the lives of our members and the health of Hawai'i.

Mark M. Mugiishi, M.D., F.A.C.S.

President and Chief Executive Officer, Hawai'i Medical Service Association

NONPROFIT PARTNERS

American Association of University Women

American Lung Association in Hawaii

Better Business Bureau

Creative Mornings Honolulu

EWI of Honolulu

Hawaii Employers Council

Hawaii Literacy Foundation

Hawai'i State Coalition Against Domestic Violence

Hawaii Women in Filmmaking

HDS Foundation

Honolulu Habitat for Humanity

Japanese Cultural Center of Hawai'i

NAWIC



LA PIETRA

HAWAII SCHOOL FOR GIRLS



ACCEPTING APPLICATIONS

All-Girls Grades 6-12

JOIN OUR OPEN HOUSE

Scan to register for Nov. 6, 2022



Celebrating Women in Leadership

First Hawaiian Bank proudly supports the growth for women in leadership whose many backgrounds and experiences result in better problem-solving, enhanced team performance and innovation.



First Hawaiian Bank.
It all starts with yes.

FHB.com

Member FDIC



PATSY T. MINK
CENTER FOR
BUSINESS &
LEADERSHIP
WOMEN'S BUSINESS CENTER

ELEVATE YOUR LEADERSHIP

Empowering Hawaii's women leaders
for today + tomorrow.

- + Patsy T. Mink Leadership Alliance
- + Wahine Rising
- + Mink Wahine Leadership Series

Learn more at mcbhlhawaii.org.

CONNECT WITH US



(808) 695-2635



mdbl@ywcaoahu.org



[@mcblhawaii](https://www.facebook.com/mcblhawaii)

PATSY T. MINK
CENTER FOR
BUSINESS &
LEADERSHIP
WOMEN'S BUSINESS CENTER

eliminating racism
empowering women
ywca
O'ahu



Funded in part through a Cooperative Agreement with the U.S. Small Business Administration. All opinions, conclusions, and/or recommendations expressed herein are those of the author(s) and do not necessarily reflect the views of the SBA

Opening General Session

Keynote Address : A New Era in Space

8:30-9:45 A.M. | CORAL BALLROOM III-V

Astronaut Experience: Hospitality for the New Golden Age of Space Travel

Sarah Phelps, Director of Astronaut and Customer Experience at Blue Origin, discusses a new, emerging sector within hospitality where there are no limits: commercial space tourism. Ms. Phelps will share her nontraditional route to a career in the aerospace industry and how she is helping bring hospitality to the future of space travel. She will also share the latest news and projects from Blue Origin as it works on its vision of having millions of people living and working in space to benefit Earth.



KEYNOTE

Sarah Phelps

DIRECTOR OF
ASTRONAUT
AND CUSTOMER
EXPERIENCE,
BLUE ORIGIN

KEYNOTE INTRODUCTION BY LA PIETRA STUDENTS



Nina Jade Batacan
STUDENT, LA PIETRA -
HAWAI'I SCHOOL
FOR GIRLS



Jade Heimowitz
STUDENT, LA PIETRA -
HAWAI'I SCHOOL
FOR GIRLS

OPENING REMARKS FROM



Cheryl Oncea
PUBLISHER,
HAWAII BUSINESS
MAGAZINE



**Jill Hoggard
Green, PhD, RN**
PRESIDENT & CEO,
THE QUEEN'S
HEALTH SYSTEM



Noriko Namiki
CEO,
YWCA HAWAI'I

PERFORMANCE BY LA PIETRA - HAWAI'I SCHOOL FOR GIRLS



WE'RE TAKING CARE TO NEW HEIGHTS.



When it comes to travel, we believe that care shouldn't be rare.
From takeoff to touchdown, we're here to take care of you—every mile of the way.

Alaska
AIRLINES



AlohaCare strives each day to ensure equity for all women through all stages of life.

- **We do this as a health plan**, supporting the whole person health of women through culturally responsive programs that address medical and social issues.
- **We do this as an employer**, providing women with advancement opportunities and a fulfilling work/life balance.
- **We do this as an advocate for women, their families, and communities** throughout Hawai'i.

AlohaCare was founded in 1994 by Hawai'i's community health centers to ensure health equity for all of our communities. We are a community-led, non-profit organization dedicated to serving Medicaid and Medicare beneficiaries exclusively. For more than 28 years, AlohaCare has made improving the health of our family, friends and neighbors with limited resources our mission.

www.AlohaCare.org



ALOHACARE

Morning Session I

Letting Go to Grow

10:00 - 11:00 A.M. | CORAL I

When you let go, you open yourself up for possibilities of what could be. During this session, learn how to step out of your comfort zone for bigger rewards. Our panel of speakers will encourage you to take the leap into the next opportunity.



MODERATOR

Catherine Toth Fox

EDITOR AT LARGE, HAWAII MAGAZINE

Born and raised on O'ahu, Catherine Toth Fox is the editor at large of *HAWAII Magazine*, a Honolulu-based travel digital platform. After earning a master's degree in journalism from Northwestern University, she worked as a newspaper reporter, journalism instructor, freelance writer and blogger—sometimes all at once. Despite all the jobs she's had in her career, her role as mom to her 5-year-old son is the hardest but most rewarding.



Noe Goodyear-Ka'ōpua

TRUSTEE, KAMEHAMEHA SCHOOLS

Born and raised on O'ahu, Dr. Noelani Goodyear-Ka'ōpua is a professor of political science at UH Mānoa. Noe's commitment to education is also evidenced in her work as a co-founder of Hālau Kū Māna public charter school, a board member of the Kānehūnāmoku Voyaging Academy, and a trustee of the Kamehameha Schools. She is a researcher and writer who has published several books and many articles on Hawaiian education and social movements.



Colleen McAluney

DIRECTOR, PATSY T. MINK CENTER
FOR BUSINESS & LEADERSHIP

Colleen McAluney is the Director of the Patsy T. Mink Center for Business & Leadership Women's Business Center. For the last 7 years she has been at YWCA Oahu working closely with entrepreneurs and women leaders to support and nurture their growth. Colleen also brings over 15 years of retail merchandising and management experience having worked at local retailer Reyn's wearing numerous "hats," including store manager, planner and buyer for multiple locations across the state. She has volunteered extensively in the nonprofit sector in event development and management. She is an entrepreneur host for the American Councils International Professional Fellows Program and a member of the Community Based Economic Development Advisory Council. Colleen holds a bachelor's degree in business administration from Pepperdine University. She enjoys hiking, traveling, farmer's markets and finding the next best pop-up restaurant or food truck.



Maile Meyer

OWNER/FOUNDER, NATIVE BOOKS/
NĀ MEA HAWAII

Maile Meyer loves reading and has a vivid imagination. She went to Punahou School, Stanford University and received an MBA from UCLA. She "married brilliantly, to an Italian with a Hawaiian soul," and started a book distribution business as a young mother. In the 1980s she "opened good ideas and closed bad ones" and in the 1990s she set up a makers' collaborative with 18 entities. She is connected to permeable and inclusive community-based entities including, Nā Mea Hawai'i, Native Books, Aupuni Space, KEANAHALA and Pu'uhonua Society.



Kailee Freitas

OWNER & FOUNDER, MAHINA MADE

Kailee Freitas is the owner and founder of Mahina Made, Ho'omau Hawai'i Market, and Mo'o Hawai'i. Freitas grew up on O'ahu, graduated from Kamehameha Schools, and then pursued her degree in elementary education. After 9 years of teaching, Freitas left this career to pursue her businesses full time. Freitas is married to her high school sweetheart and they have two sons which she says provides her with so much inspiration in all her endeavors.

Morning Session I

Are You “Climbing” or “Navigating” Your Career?

10:00 – 11:00 A.M. | CORAL II

A career portfolio goes beyond a resume to represent your vast and diverse professional journey, including the various twists and turns, whether made by choice or circumstance. It reflects your professional identity and includes your unique combination of skills, experiences and talents. Prominent and well-respected local leaders will share their career portfolios and the unique life experiences that gave them the skills necessary to become who they are today. They will also discuss why employers should cultivate a company culture that encourages diversity of experience and thought to navigate today's ever-changing world.



MODERATOR

Unyong Nakata

FOUNDER & PRINCIPAL, NAKATA ADVISORY, LLC

Unyong Nakata is the Founder and Principal of Nakata Advisory, LLC, where services are focused on catalyzing business development and operational alignment. Unyong is driven by the core values of integrity, excellence, and compassion; her diverse experiences have cultivated a unique toolkit to complement her innate drive to create clarity, alignment, and excellence through the most important asset – people.



Amy Marvin

PRESIDENT & CEO,
HAWAII FOODBANK

Amy Miller Marvin is the president and CEO of Hawai'i Foodbank. Previously, she was the senior vice president and COO of the Bishop Museum. She graduated magna cum laude from Harvard University with a bachelor's degree in environmental science and public policy before earning her master's degree in psychology - marine mammal behavior and biology at the University of Hawai'i at Mānoa.



Dana Harvey

DIRECTOR EXTERNAL AFFAIRS,
ALEXANDER & BALDWIN

Dana Harvey joined A&B in 2013 and oversees the company's government affairs and community relations functions, charitable giving program, and community outreach efforts. Before joining A&B, Harvey spent a decade in government relations as a public affairs advisor for local law firm Watanabe Ing and in the Hawai'i Department of Transportation Director's Office. Harvey is a Public Schools of Hawai'i Foundation trustee, serves on the Kapi'olani Health Foundation Young Leaders' Board and is the proud mom of a 12-year-old son and two rabbits.



Miki Tomita

FOUNDER, EDUCATION INCUBATOR

Miki is the Founder & CEO of Education Incubator, a nonprofit dedicated to empowering young people, adults and communities to live with passion and purpose in service of a better world. She has worked in education for 20+ years as a teacher, administrator, curriculum developer, and researcher. Born and raised on Maui, Miki graduated from Baldwin High School, earned a B.S.E. in Biosystems Engineering from University of Hawai'i-Mānoa, and a Ph.D. in Education from Stanford University.



Shannon Okinaka

EXECUTIVE VICE PRESIDENT
& CHIEF FINANCIAL OFFICER,
HAWAIIAN AIRLINES

Shannon Okinaka was appointed Executive Vice President and Chief Financial Officer for Hawaiian Airlines in May 2015.

Previously, Okinaka served as Senior Vice President and Interim Chief Financial Officer since January 2015. Okinaka joined the company as Senior Director in charge of Sarbanes-Oxley compliance and special projects before being promoted to Vice President – Controller in 2011. Prior to Hawaiian Airlines, Okinaka worked for Hawaiian Electric Co. and Coopers & Lybrand/PricewaterhouseCoopers.

A certified public accountant, Okinaka graduated from the University of Hawai'i at Mānoa, earning a Bachelor of Business Administration degree in Management Information Systems and Accounting.

Morning Session I

Building a Stronger Community Starts with You!

10:00 - 11:00 A.M. | SOUTH PACIFIC I-II

Frequently, we give too much of ourselves. From working extra hours to trying to “power through” a cold, we’ve become workaholics in an effort to care for our job, our family and our community. It takes a toll on our body, our mind and our emotions. Hear from Queen’s caregivers about how they are working to find the right balance of caring for our community while also caring for themselves in this meaningful session.



MODERATOR

Yunji de Nies
JOURNALIST

Yunji de Nies co-hosts Spotlight Hawaii, a 3x/week news program live-streamed on the Honolulu Star-Advertiser’s home page and social media platforms. She also hosts Insights on PBS Hawai’i, a weekly public affairs program. For five years, Yunji anchored the evening news at KITV, the Honolulu ABC affiliate, and before that worked as a White House and National Correspondent for ABC News, based in Washington D.C. and Atlanta. Yunji graduated with honors with a degree in political science from Yale University and holds a Master’s Degree in journalism from UC Berkeley.



Hepua Hermosura, PhD

DIRECTOR OF DIVERSITY, EQUITY, INCLUSION AND SOCIAL JUSTICE (DEIJ) & CAREGIVER WELLNESS, THE QUEEN’S HEALTH SYSTEM

Hepua Hermosura, PhD, is the Director of Diversity, Equity, Inclusion and Social Justice (DEIJ) & Caregiver Wellness for The Queen’s Health System (QHS). Hepua is responsible for the planning, development, implementation, and maintenance of system-wide policies, practices, initiatives, and programs that are in alignment with the QHS mission and values and The Joint Commission Health Care Equity requirement that begins in January 2023. She will work to deepen the organization’s commitment to DEIJ principles and caregiver wellness. Hepua works with the DEIJ & Wellness Leaders’ Work Group, which is made up of executives, managers, and front line staff, including Naleen Andrade, MD, Executive Vice President of Native Hawaiian Health and Chief DEIJ Officer.

Hepua has been with The Queen’s Medical Center as a staff psychologist since 2018. She earned her doctorate in Clinical Psychology from the University of Hawai’i at Mānoa, and currently serves as an Assistant Professor at the University of Hawai’i at Mānoa Department of Native Hawaiian Health, John A. Burns School of Medicine.



Alexandra Wroe

VICE PRESIDENT, PATIENT CARE- MEDICINE, CARE COORDINATION, UTILIZATION MANAGEMENT AND CLINICAL DOCUMENTATION IMPROVEMENT, THE QUEEN’S HEALTH SYSTEM

Alex moved from Canada to Hawai’i and joined the Queen’s Health Systems in 2016. She currently serves as the Vice President of Patient Care, where she provides leadership and strategic guidance over the Department of Medicine in partnership with the Chief of Medicine. She also oversees Queen’s Care Coordination and Patient Flow Efforts and plays an important role in standardizing clinical protocols, advancing quality and patient safety. Alex earned her Bachelor of Science in Nursing from Laurentian University in Ontario, Canada, and her Executive Master of Business Administration from the University of Ottawa in Ontario, Canada. She is on the Board of Directors at Navian Hawai’i and is passionate about care transitions, addressing health disparities and motivated to improve quality patient outcomes while decreasing total cost of care.

Alex, her husband and two young children live in Hawaii Kai and enjoy a very active lifestyle with many ocean adventures and trips to the beach.



Valli Palmer, RN, BSN

THE QUEEN’S MEDICAL CENTER

Valli Palmer, RN, BSN earned her Bachelor’s Degree of Arts in Biology from the University of Northern Colorado and Bachelors Degree of Science in Nursing from the University of Hawaii at Mānoa. She has 18 years of bedside nursing experience all of which have been at The Queens Medical Center Punchbowl in Honolulu, Hawaii, where she is a Permanent Charge Nurse on Pauahi 7. She is Certified in Medical-Surgical Nursing and has been a Clinical Ladder Nurse III for the past 7 years.



THINK BIG GO DEEPER OPEN MINDS PROPEL ACTION MAKE WAVES

LET US **MAKE WAVES** FOR YOU (IT'S WHAT WE DO)

[ANTHOLOGY®]

A FINN Partners Company

808.544.3000 • ANTHOLOGYGROUP.COM

ATLAS
INSURANCE AGENCY



Atlas Insurance Agency, Proudly Led by Hawai'i's Female Leaders



atlasinsurance.com | info@atlasinsurance.com | 808-533-3222 201 | Merchant St., Ste. 1100, Honolulu, HI 96813

Morning Session I

Sitting at the Executive Table

10:00 – 11:00 A.M. | SOUTH PACIFIC III-IV

Although the number of female executives has increased, women are still significantly underrepresented in top-level management. The number of women-led companies on the 2022 Fortune 500 list hit a record high of 44 female CEOs – but the number only represented 8.8% of businesses. Tune into a conversation with some of Hawaii's top female CEOs as they discuss their paths to leadership and how they are paving the way for others to follow.



MODERATOR

Trini Kaopuiki Clark

PRESIDENT & CEO, MAKE-A-WISH HAWAII

As President and CEO of Make-A-Wish® Hawaii, Trini Kaopuiki Clark leads a team of 25 staff and more than 400 Hawaii volunteers to support the organization's mission of creating life-changing wishes for children with critical illnesses. A University of Hawai'i graduate, Clark is an accomplished local professional with nearly 20 years of communication experience in the Hawai'i television industry and more than 13 years of nonprofit leadership.



Shelee Kimura

PRESIDENT & CEO,
HAWAIIAN ELECTRIC

Shelee Kimura is the president and chief executive officer of Hawaiian Electric, which serves 95% of Hawai'i's population on the islands of O'ahu, Hawai'i, Maui, Lāna'i and Moloka'i and is committed to serving communities with safe, affordable, reliable clean energy.

She served as senior vice president of Customer Service & Public Affairs and senior vice president of Business Development & Strategic Planning providing leadership for the company's customer care initiatives through the COVID-19 pandemic and economic downturn, making equity and access a top priority while improving customer satisfaction and stakeholder engagement. She led the development of Hawaiian Electric's 2015- 2020 Strategic Transformation Plan and co-led the Transformation Office responsible for execution. She strengthened and grew the Hawai'i market for affordable, clean energy resources and launched the electric transportation division, which will play a critical role to help decarbonize Hawai'i's economy.



Su Shin Meisenzahl

PRESIDENT & GENERAL MANAGER,
HAWAIIAN TELCOM

Su Shin is Hawaiian Telcom's first female president in the company's more than 136-year history.

A strategist, consultant and implementer, Ms. Shin previously served as Chief of Staff, providing strategic counsel to Hawaiian Telcom's president and senior leadership team, and managing and directing key projects and initiatives.

A seasoned senior strategic communications executive with more than two decades of experience, Su served as Executive Director of Marketing and Communications, responsible for all marketing execution and communications functions, including traditional/offline and online advertising, direct marketing, website management and development, social media, as well as strategic internal and external communications.

Committed to giving back to the community, she serves on Aloha United Way's Board of Directors, the McKinley High School Foundation, and the advisory council for the University of Hawai'i at Mānoa Outreach College.



Karen Tan

PRESIDENT & CEO,
CHILD & FAMILY SERVICE

Karen Tan, LCSW, is a fierce yet empathetic leader whose bold vision brings hope to Hawai'i's families and children statewide, while ensuring CFS' impact is relevant and meaningful. Karen is a changemaker, raising awareness of Hawai'i's social issues, and collaboratively working with business leaders, lawmakers and other nonprofits to solve our state's most pressing and complex issues for families and children.

Karen's guiding vision is HOPE; concepts of humility, ownership, perseverance and engagement. These pillars are infused throughout every aspect of CFS, and something each employee holds close. Karen embodies these concepts, relying on them to lead CFS, a 123-year-old organization that touches more than 75,000 lives annually. Overseeing a \$32-million budget, nearly 400 staff and dozens of programs statewide while ensuring accountability, Karen charts the course for CFS to help individuals and families prevent and heal from trauma such as poverty, abuse, and neglect.



Dr. Jill Hoggard Green

PRESIDENT & CEO,
THE QUEEN'S HEALTH SYSTEM

Jill Hoggard Green, PhD, RN was appointed President and CEO of The Queen's Health Systems in September 2019. Before joining Queen's, she served as Chief Operating Officer of Mission Health and President of Mission Hospital in Asheville, North Carolina.

A registered nurse whose career includes work with the oncology and bone marrow transplant units at a Level I trauma facility and at leading hospitals, ambulatory, and home health services in Alaska, Washington, and Oregon, Dr. Hoggard Green has dedicated her life to improving patient care.

Dr. Hoggard Green received her Bachelor of Science (nursing), Master of Science, and Doctor of Philosophy (concentration in health system leadership, quality, and models of care) from the University of Utah. She has been involved in numerous community service and professional organizations and boards, including Make-A-Wish Foundation and the YWCA.



CANDIES BIG ISLAND®

Watch dedicated artisans at our Hilo Flagship Store create signature dipped shortbread - and more - right before your eyes!

Shop for holiday gifts that celebrate the joy of the seasons and the natural beauty of Hawaii.

Hawaii's finest cookies, chocolates and confections, since 1977.

Hilo - Factory & Retail Gift Shop - 585 Hinano Street

Honolulu - Ala Moana Center, Street Level 1, Center Court

1-808-935-8890 / 1-800-935-5510 | www.bigislandcandies.com



Great leaders prioritize the health and future of mana wahine.

When women are given access to a healthier smile and good overall health, everyone benefits. Hawaii Dental Service (HDS) has prioritized the oral health of local families for the last 60 years. Today we celebrate our investment in the community to provide women and their loved ones access to the dental care they need to be successful at every age.

Visit us online at HawaiiDentalService.com to learn more about our mission and what we're doing in the community to empower mana wahine and our members to Live Well, Smile More.

 DELTA DENTAL

HDS
Hawaii Dental Service

60 Years of
Healthy Smiles
& Local Roots

HawaiiDentalService.com

Morning Session II

Content is Queen

11:15 A.M. - 12:15 P.M. | CORAL I

Join Betsy Henning, Managing Partner at Finn Partners and Global Internal Communications & Employee Engagement Practice Leader, for a presentation on how insight-driven content can drive profitability and enhance your brand. With over 30 years of experience, Betsy offers unique expertise in accelerating workforce capability, commitment and trust through smart communications and campaigns that connect deeply with employees across an organization. Betsy is a trusted advisor for Fortune 500 companies. Past clients include HP, Nike, Microsoft, Google, Johnson & Johnson, Charles Schwab, Best Buy, and more. Following her presentation, Mary Fastenau, senior partner at Anthology Group and Crystal DeRosier, marketing manager at Halekulani and Halepuna Waikiki, will join Betsy for a talk story about how Hawai'i businesses can change up their digital marketing strategies.



Betsy Henning

MANAGING PARTNER, GLOBAL INTERNAL
COMMUNICATIONS & EMPLOYEE ENGAGEMENT
PRACTICE LEADER, FINN PARTNERS

With over 30 years of experience, Betsy offers unique expertise in accelerating workforce capability, commitment and trust through insight-driven communications and campaigns that connect deeply with employees across an organization.

Betsy is a trusted advisor to Fortune 500 companies across a variety of industries on internal engagement, employee engagement, and transformational organizational change. Past clients include HP, Charles Schwab & Co., Nike, Johnson & Johnson, Microsoft, Tiffany, Hasbro, VMware, Google, Moody's, NBCUniversal, Prudential, Comcast, Best Buy, PwC and others.

Betsy is a sought-after speaker and frequent contributor to Adweek, Ad Age, The Drum, Campaign and others industry-leading media.

Betsy lives with her husband and two Old English Sheepdogs in the Pacific Northwest.



Mary Fastenau

SENIOR PARTNER, ANTHOLOGY GROUP

Mary Fastenau is a Senior Partner at Anthology Marketing Group, a Finn Partners Company. Her responsibilities include account service, media, and social media. She started a digital division in 1995 and is a strong advocate of all things online. Fastenau has more than 40 years of experience in newspapers, advertising, communications, and digital marketing. She is passionate about mentoring, promoting women in business, and giving back to the community that has given her so much.



Crystal DeRosier

MARKETING MANAGER, HALEKULANI AND
HALEPUNA WAIKIKI

Crystal is the marketing manager for Halekulani and Halepuna Waikiki and is passionate about building community & focus to uplift the arts and culture of Hawai'i. In her role she is active in creating ways for guests to the islands to engage with the community and foster understanding they can bring home with them. Prior to her time in Hawai'i, Crystal was in the Marketing Division at Walt Disney Studios, designing & producing film premieres. She is also a metalsmith and sole proprietor of her online shop, Crystal Rose Design.

Morning Session II

The Glass Ceiling is Broken, Now What?

11:15 A.M. - 12:15 P.M. | CORAL II

In industries previously dominated by a male workforce and leadership, we are seeing an upward trend of women at all levels and across a variety of business sectors. Join our panel of female leaders as they discuss their career journey through male-dominated industries and share advice for the next generation of women in the workforce. The glass ceiling may be shattered, but what can be done to continue to pave the way?



MODERATOR

Grace Lee

ANCHOR, SUNRISE, HAWAII NEWS NOW

Grace Lee grew up in a small city in northern Alabama before going to college at UCLA. Lee started as an intern at KNBC in Los Angeles, her first on air job was at KGMB as a reporter, and prior to starting Sunrise, she spent 3 years as a reporter at KCRA in Sacramento.

15 years ago, KGMB didn't have a regular morning show. Sunrise was born to shake up the market with the news you need for your day. That includes breaking news, community issues, weather and traffic. Now, Sunrise has been the most watched morning show in Hawai'i for 14 of those 15 years.



Gina Anonuevo

EVP & CHIEF COMPLIANCE OFFICER,
FIRST HAWAIIAN BANK

Gina Anonuevo is Executive Vice President and Chief Compliance Officer of the Corporate Compliance Group, a position she has held since 2011, overseeing the Bank's bank-wide Compliance Management Program, which includes the Bank Secrecy Act/Anti-Money Laundering Program. She joined First Hawaiian Bank in 2006 as Executive Vice President and General Auditor where she directed the Bank's internal Audit Division, conducting credit examinations and system-wide internal audits. She was appointed a member of the Bank's Senior Management Committee in January 2015 and serves as a member of the First Hawaiian Bank Foundation board. She previously was an FDIC Commissioned Bank Examiner with the Federal Deposit Insurance Corporation from 1998 to 2006 and a California State Bank Examiner from 1996 to 1998. Prior to that, she was a Business Tax Auditor with the San Francisco City and County from 1993 to 1996. She earned a Bachelor of Business Administration in Accounting from California State Hayward University and is a graduate of Pacific Coast Banking School in Seattle Washington.



Paula Akana

EXECUTIVE DIRECTOR,
THE FRIENDS OF IOLANI PALACE

Paula Akana is the Executive Director with The Friends of Iolani Palace and is much known for her 30 plus years as a broadcast journalist for KITV Island News. Paula is a graduate of the Kamehameha Schools, and the University of Hawai'i at Mānoa where she received her Bachelor of Arts degree in journalism.

Paula has served with a number of local nonprofit organizations over the years, including the Board of Directors for YMCA Metro Honolulu and Ma'o Farms and is a member of the Hawaiian Civic Club of Honolulu. She also volunteered with the Polynesian Voyaging Society for many years, working on education initiatives, and fundraising efforts.

She made the journey from nonprofit volunteer to Executive Director of The Friends of Iolani Palace in July 2019.



Sarah Guay

PRESIDENT & CEO, HAWAII EMPLOYERS COUNCIL

Sarah Guay was appointed President and Chief Executive Officer in June 2022. In her role, she collaborates with HEC's board of governors and staff to address the ever-evolving needs of Hawaii's employers and is responsible for the organization's leadership, day-to-day operations, and strategic initiatives.

Sarah has more than 20 years of experience leading local organizations' initiatives related to human resources, organizational development, and workplace culture. Prior to joining HEC, she served as Vice President of Human Resources at HEMIC. She is a director with the Oahu Economic Development Board, Big Brothers Big Sisters Hawaii, and serves as an Advisor for the Patsy T Mink Center for Business and Leadership.

She received her Master's Degree in Organizational Communication and Bachelor's Degree in general communication from Washington State University.

Morning Session II

Thrive in the Fourth Trimester

11:15 A.M. - 12:15 P.M. | SOUTH PACIFIC I-II

Motherhood is a great honor and privilege, but it isn't easy. Working moms often face an uphill battle when they return – they can lose key responsibilities, titles or chances for promotion. This session will explore strategic ways that women can rejoin the workforce after a child's birth, discover their new selves and find success as new moms.



MODERATOR

Ashley Nagaoka

ANCHOR, HAWAII NEWS NOW

Ashley Nagaoka anchors Hawaii News Now's "First at Four" newscast at 4 p.m. on KHNL and the popular midday round-up show, "This Is Now" at 12 p.m., on KHNL and HNN's streaming platforms.

The Kaua'i-native worked as press secretary and spokeswoman for then-U.S. Rep. Colleen Hanabusa. After five years on Capitol Hill, Ashley moved back to Hawai'i and joined Anthology Marketing Group, where she managed public affairs clients in tourism, government, energy, land development, and agriculture.

Ashley re-joined KGMB, this time as a member of the Hawaii News Now team, in 2017.



Brittany Heyd

CO-FOUNDER, MANA UP

Brittany is a co-founder at Mana Up, a Hawai'i-based economic development initiative building the next generation of local consumer brands expanding to markets globally, with the goal to expand economic opportunity and high potential jobs in Hawai'i. Mana Up is an accelerator program, an online store, and retail location in the heart of Waikiki featuring local products to an international audience. Before Mana Up, Brittany worked in Washington, DC in venture capital and entrepreneurship, as well as held positions at the White House, Latham & Watkins and Mark IV Capital. Brittany lives in Maui, Hawaii with her husband and four children.



Lisa D. Ayabe

PARTNER, CADES SCHUTTE LLP

Lisa D. Ayabe is a partner at Cades Schutte LLP. She assists clients in navigating Hawai'i's complex real property laws. Active in the community, Lisa currently serves on the boards of NAIOP Hawai'i and the Hawai'i Chapter of the National Asian Pacific American Bar Association. She is a member of Hawaii Business Magazine's 20 for the Next 20 Class of 2020, Pacific Business News' 40 under 40 Class of 2016, and Pacific Century Fellows Class of 2016.



Leilani Sills

OWNER, THE KEIKI DEPT.

Leilani Sills is Māma to 4 young keiki and the owner of The Keiki Dept. A proud graduate of Kamehameha Schools, she received her BS in Kinesiological Sciences from UNLV and MEd. from Chaminade University. After the birth of her oldest son, she started the Keiki Dept. as a passion project after seeing a need for locally inspired Keiki clothing and accessories.

Here with you

HMSA is proud to support Hawai'i's wahine in building healthier communities.



An Independent Licensee of the Blue Cross and Blue Shield Association

1010-649130

JPG

DESIGN + PRINT + ADVERTISE

SIGNS & VEHICLE WRAPS



OUT OF HOME ADVERTISING



VEHICLE ADVERTISING



GROCERY STORES



GAS STATIONS



SHOPPING MALLS

JPGhawaii.com 808.429.4544 bg@jpghawaii.com

Morning Session II

Disrupt Your Feed

11:15 A.M. - 12:15 P.M. | SOUTH PACIFIC III-IV

Inspired by The Female Lead's "Disrupt Your Feed" campaign, this session will examine social media's negative impacts on our well-being and self-esteem, and how we can take control of our online feeds to focus on balanced, healthy content. Local psychologists, influencers and entrepreneurs will discuss social media's role in women's health and share ways you can intentionally use social media for empowerment, inspiration and career motivation.



MODERATOR

Yasmin Dar

EXECUTIVE VICE PRESIDENT & COO,
RKT MEDIA HAWAII

Yasmin Dar, a proud graduate of Aiea High School, is a full-time businesswoman and full-time mom of four. The former news anchor graduated with a B.A. in biology and later received her M.A. in communications from the University of Hawai'i at Manoa. Today she is the Executive Vice President and Chief Operating Officer of RKT Media, a video production company helping local businesses and non-profits tell their story through creative videos.



Kolby Moser

FOUNDER & DIRECTOR, ARIA STUDIOS,
CO-HOST OF THE UNCUT PODCAST

Kolby Moser is a Film Director, Producer, Business Coach and Podcast Host. She began her career as a News Television Producer before starting ARIA Studios in 2008. Kolby also co-founded ARIA Childrens Fund - a non-profit that partners with organizations around the world to combat child trafficking. She co-hosts the podcast "Uncut Hawaii," interviewing Hawai'i's top creators, entrepreneurs and change-makers.



Dr. Chelsea Wong

PSYCHOLOGIST, THE QUEEN'S MEDICAL CENTER

Dr. Chelsea Wong is a staff psychologist at The Queen's Medical Center. She works on a multidisciplinary consultation-liaison (C/L) psychiatric service on medical-surgical units, and on an inpatient psychiatric unit. Dr. Wong is also a Mental Health Emergency Worker with the Hawai'i State Department of Health, and Assistant Clinical Professor at the University of Hawai'i at Mānoa, John A. Burns School of Medicine, Department of Psychiatry. Dr. Wong earned her doctorate in Clinical Psychology from Pacific University in Oregon. She completed her predoctoral internship at Waianae Coast Comprehensive Health Center, and completed her postdoctoral fellowship at Indian Health Board of Minneapolis.



Chelsa Davis

FOUNDER & FORMULATOR, AO ORGANICS HAWAII

Chelsa was born on the island of O'ahu, being in foster care brought her to the Big Island during her youth, where her heart was rooted and she returned to as an adult. She is now a mother of three beautiful keiki and the founder and formulator of Ao Organics Hawaii & Ao Zero Waste Refill Bar. She started her first company Ao Organics Hawaii when she was pregnant with her third child, starting with just reef safe sunscreen. Her mission was to protect our coral reefs and oceans while educating our communities about the importance of using ocean safe sunscreens. Since starting her first company she has also started a zero waste and refill bar where she educates the community about creating less plastic waste, being more sustainable, and providing the tools and products to go along with it. She has been featured in the *New York Times Magazine*, *Honolulu Magazine*, and high end luxury resorts.

WAHINE FORUM EXPO CARD



You could be a winner!

Don't forget to drop your
completed bingo cards at the
Hawaii Business expo table
and enter for a chance to win
two roundtrip tickets from

Alaska[®]
AIRLINES

*CARD MUST BE FILLED AND YOU MUST BE PRESENT TO WIN.

SUPPORT MA'I MOVEMENT HAWAII

Make a donation to
Ma'i Movement Hawaii at the
First Hawaiian Bank booth
and receive a limited edition
cosmetic bag personalized
onsite by Handwritten Aloha
and Hawaii Calligraphy.



First Hawaiian Bank.

Afternoon Session

Participation and Power in Negotiations

1:30 - 2:30 P.M. | CORAL I

Imagine how different the world would be if every child learned basic negotiation skills in elementary school, and those skills were enhanced in middle school, high school, and beyond. No doubt many people would approach their lives differently and find greater satisfaction in dealing with daily issues they encounter, no matter how great or small.

While most of us weren't provided with negotiation training at an early age, everyone can learn to negotiate and can adapt those skills to their own unique personality. If you weren't encouraged or trained to negotiate, or if you want to improve your current skills, you must observe, learn to be a great listener and communicator, and apply critical thinking to every negotiation opportunity. By doing so, you will improve your self-confidence, create more opportunities for yourself, and strengthen relationships personally and professionally.

This interactive workshop will provide you with:

- Tools to build or add to your negotiation toolbox
- Ideas for analyzing and implementing negotiation strategies
- The opportunity to review or define, the best approaches to past and future negotiations



MODERATOR

Tracey Wiltgen

EXECUTIVE DIRECTOR, THE MEDIATION
CENTER OF THE PACIFIC, INC

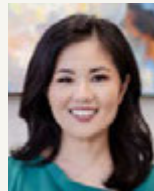
Tracey S. Wiltgen, Esq., is the Executive Director of the Mediation Center of the Pacific, a nonprofit corporation that assists over 12,000 people annually with the prevention and resolution of conflict of all types. Tracey designs and implements dispute resolution programs that meet the needs of the community, and conducts training on mediation, facilitation, and conflict resolution throughout Hawai'i, the Continental U.S., and the Asia-Pacific region. She is a Lecturer in Law at the William S. Richardson School of Law and previously taught at the Matsunaga Peace Institute, Hawai'i Pacific University, and Chaminade. Tracey serves on the Administrative and Pro Bono Initiative Committees for the Hawaii Access to Justice Commission, is a trustee for the Rotary Club of Honolulu Foundation, and a member of Aloha United Way's Community Impact Committee. She holds a JD from the William S. Richardson School of Law, an MS from the University of Hawai'i, and a BS from Gonzaga University.

Afternoon Session

Career Transitions: Trials, Tribulations and Lessons Learned

1:30 - 2:30 P.M. | CORAL II

It is not uncommon to find yourself feeling stuck and ready for a change mid-career, but the thought of such a change can often be overwhelming. Whether it's transitioning into a new role within your company or moving into a new career path, there is a lot to consider. What risks are involved? What resources will help me on this new journey? During this session, experienced professionals will share key takeaways and lessons learned from their own career transitions.



MODERATOR

Jennifer Oyer

FOUNDER & CHIEF JOY OFFICER,
COMMUNITY IMPACT ADVISORS

Jennifer's passion to serve others and the community, combined with nearly 20 years of fund development experience driving strategy, execution, and building meaningful relationships, has allowed her to partner with generous donors to raise nearly \$60 million for education, healthcare, and social services organizations across the state of Hawai'i.

As Founder and Chief Joy Officer of Community Impact Advisors, a boutique nonprofit consulting firm, Jennifer is able to utilize her strengths to nurture collaboration among teams, provide purpose for organizations, and nourish thriving communities.



Dr. Lynn Babington

PRESIDENT, CHAMINADE UNIVERSITY

Lynn Babington became the tenth president of Chaminade University in 2017. She is the university's second lay president. Before joining Chaminade, Dr. Babington served as interim president of Fairfield University in Connecticut.

Her contributions to higher education, teaching and the health care arena are substantial. A lifelong advocate of teaching and learning with a breadth of experience in academic, hospital, clinical and private sector settings, Babington is highly regarded for her work and regularly called upon for her expertise. Her contributions to the nation's health care environment extend far beyond the institutions she has served. Babington studied as a Fulbright Scholar at Ben Gurion University in Israel and was selected in 2013 as a Robert Wood Johnson Foundation Executive Nurse Fellow designed to nurture industry leaders in their efforts to improve the nation's health care system. Babington's successful career in healthcare, impressive record of external support, numerous teaching awards and advisory positions are testaments to the impact she has made.



Jennifer Tanabe

CREATIVE DIRECTOR, ALTRES

Jennifer Tanabe is Creative Director at ALTRES, Hawai'i's leading human resource and staffing company. With 25 years of design and advertising industry experience, Jen has helped to launch and cultivate award-winning brands for clients such as Kaiser Permanente, McDonald's, Hawaiian Telcom, Starwood Hotels and Resorts, Hawaii National Bank, and The Surfjack Hotel and Swim Club. She is passionate about helping organizations flourish through strategic audience-centric thinking and innovative creative problem solving.

Born and raised in Honolulu, Jen is a graduate of Punahou School and holds a BFA in Graphic Communications from the School of Art at Washington University in St. Louis, Missouri.

Before joining ALTRES, she was Partner and Creative Director at Wall-to-Wall Studios, a brand design agency located in Honolulu and Pittsburgh, for nearly a decade. Prior to joining Wall-to-Wall Studios, Jen worked in various advertising agencies and design firms in St. Louis, San Francisco, and Honolulu. Over the course of her career, Jen has received over 200 creative design and advertising awards. In 2016, she was named AAF Hawai'i's Advertising Woman of the Year.



Dr. Shawn Kana'iaupuni

CEO, PARTNERS IN DEVELOPMENT FOUNDATION

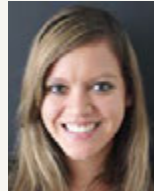
As a Native Hawaiian leader, Shawn Kana'iaupuni, PhD brings many years of experience in nonprofit leadership. She joined Partners in Development Foundation (PIDF) as President and Chief Executive Officer in 2020. Prior to PIDF, Dr. Kana'iaupuni's work at Kamehameha Schools was fueled by her passion to collaboratively mobilize positive educational outcomes for Native Hawaiian children. Her experiences include directing the research/evaluation division, overseeing public education and charter school programs, and planning/executing CEO projects as executive strategy consultant. Her research is published in peer-reviewed journals and books, focusing on culture-based education and Hawaiian student outcomes, place and identity, and the successes of Native Hawaiian children in public schools. She served as principal investigator on multiple large research projects at the University of Chicago and the University of Pennsylvania and as faculty at University of Wisconsin-Madison, before returning home to Hawai'i. She received her M.A. and PhD from the University of Chicago and MBA from the University of Hawai'i at Mānoa.

Afternoon Session

Why Diversity, Equity, and Inclusion Matters in Hawai'i

1:30 - 2:30 P.M. | SOUTH PACIFIC I-II

Despite its diversity of people, cultures, and backgrounds, Hawai'i still has a gap in leading and innovating in the diversity, equity, and inclusion (DEI) space. Our panel of local and global DEI leaders will share valuable lessons from their work, how some organizations are prioritizing, centering, and embedding DEI into their business, and how we all can activate both our leaders' and our own accountability in creating an equitable workplace for all employees.



MODERATOR

Anita Hofschneider
REPORTER, CIVIL BEAT

Anita Hofschneider is a reporter covering the Pacific for Civil Beat. She previously covered city and state politics, land, social issues and the pandemic. Her work has won multiple national, regional and local awards.

Prior to starting at Civil Beat, Anita covered the 2013 Hawai'i legislative session for the Associated Press and interned at the Wall Street Journal in New York. She graduated from Harvard with honors in 2012 and is originally from the U.S. Commonwealth of the Northern Mariana Islands.



Sage Ke'alahilani Quiamno

GLOBAL DIVERSITY, EQUITY & INCLUSION TECH
LEADER AT AMAZON PRIME VIDEO & STUDIOS

Sage Ke'alahilani Quiamno (she/her): Sage Ke'alahilani Quiamno is an award-winning entrepreneur, speaker, and changemaker. She is a nationally-recognized diversity, equity, and inclusion leader with experience in talent diversification/retention, employment development, and global DEI strategy. Both personally and professionally, she is relentlessly committed to intersectional social justice, advocacy for communities of color, the LGBTQIA+ community, and pay equity. Her work is grounded in centering the experiences of historically underrepresented communities and those with intersectional identities to achieve equity. She has been recognized in major media outlets like Forbes, Fast Company, Entrepreneur, and more. Ke'alahi is a proud Native Hawaiian, originally from the island of O'ahu, who looks at systems, processes, and people with indigenous sense to create a world of equity and belonging.



Sari De

FOUNDER, NINE OF US

Sari is the founder of Nine of Us, a global DEI consultancy with a mission to elevate marginalized folks into corporate leadership positions. Accredited by the International Coaching Federation, certified in neuro-linguistic programming (how the brain forms patterns and how that influences our behavior), and a trained negotiator, Sari uses her lived experience and her training to help companies dismantle systems of inequity so that each of us can have a career that matches our ambitions. Prior to founding her own company, Sari had a 17 year career at places like WPP, Meta, Microsoft and T-Mobile.



Ku'ulani Keohokalole

OWNER & PRINCIPAL CONSULTANT,
PEOPLE STRATEGIES HAWAII

Ku'ulani Keohokalole (she/her/'o ia) established People Strategies Hawai'i in 2019 with the vision of growing the capacity of organizations to foster community-minded and people-oriented leaders. She trains, consults, and supports organizations across sectors and industries who are looking to transform around the ways they engage people to achieve their mission.

The HAWAII BUSINESS PODCAST

PRESENTED BY

SERVCO



Join host Unyong Nakata as she talks with some of Hawai'i's most influential business and community leaders.

HOSTED BY:

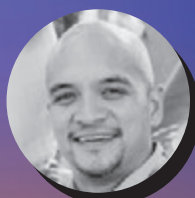


Unyong Nakata,
Nakata Advisory, LLC

SPECIAL GUESTS INCLUDE:



Kitty Yannone
CommPac



Kūha'o Zane
Sig Zane Designs



Ed Schultz
Hawaiian Host Group

LISTEN NOW

AVAILABLE EVERY OTHER THURSDAY ON
THESE PODCAST PLATFORMS:

HawaiiBusiness
Locally Owned. Locally Committed



Apple Podcasts



Spotify



Google Podcasts



Afternoon Session

Unleashing the Economic Power of Women

1:30 - 2:30 P.M. | SOUTH PACIFIC III-IV

The impact of women on the economy is vast, contributing an estimated \$7 trillion to the nation's GDP each year. Yet women still face income inequality, less representation in the workforce and an undervaluing of unpaid work. Studies have shown that closing gender gaps can lead to a more productive society and greater economic growth. Panelists will discuss the importance of changing policies, attitudes and culture by empowering women so they can meaningfully participate in economic decision-making.



MODERATOR

Robbie Dingeman

EDITOR AT LARGE, HONOLULU MAGAZINE

Robbie Dingeman is editor at large of *Honolulu Magazine*. The award-winning journalist has been telling the stories of Hawai'i for more than 20 years in daily newspapers, on television and on the web. She's covered politics, crime, consumer news and more. A graduate of the University of Hawai'i at Mānoa, she also co-authored two books, *Honolulu Homicide* and *Honolulu CSI*. On a way more fun note, she serves as one of two co-artistic directors for the semi-annual Gridiron news parody show, which allows her to obsess about the news and crack jokes while raising money for student internships through the Hawai'i chapter of the Society of Professional Journalists.



Ashley Lukens

PRINCIPAL CONSULTANT,
ASHLEY LUKENS CONSULTING INC.

Ashley Lukens, PhD is an independent philanthropic and development advisor in Hawai'i and Oregon. Ashley's passion project is a women's learning circle, Project Thesis. Ashley is a proud cancer thriver and her commitment to holistic health and well-being knits her personal and professional life together.



Darien Siguenza

PROGRAM DIRECTOR,
HAWAII FOUNDHER

Darien Siguenza is a business development professional with a deep passion for supporting ventures founded by women and people of color. She currently leads the Hawai'i FoundHer program, which focuses on uplifting wāhine entrepreneurs who are grounded in Hawai'i. Additionally, she has supported over 100 startup companies while working at LA Cleantech Incubator (LACI), and Elemental Excelsior. Darien earned her MA in Global Leadership and Sustainable Development at Hawai'i Pacific University. She is originally from Los Angeles.



Leslie Wilkins

PRESIDENT & CEO, MAUI ECONOMIC
DEVELOPMENT BOARD, INC.

Leslie joined Maui Economic Development Board, Inc. (MEDB) in 1999 to launch its Women in Technology Project (WIT), which today under its original STEMworks™ programs and in partnership with Code.org serves a statewide constituency of more than 30,000 students, teachers, and industry members each year. She was elected to MEDB's top post in 2017, to guide its mission to *lead and inspire innovation in business, education, and community*.

She has served in state and national leadership roles with the Business & Professional Women (BPW) for over three decades, chaired Hawai'i's Commission on the Status of Women for 12 years, and is the immediate past chair of the state Workforce Development Council.



Meli James

CO-FOUNDER MANA UP

Meli James is the co-founder of Mana Up, a Hawai'i-based product accelerator and venture fund building the state's next generation of consumer brands. She is also the president of the Hawaii Venture Capital Association. Born and raised in Honolulu, Meli lived in Silicon Valley for more than 10 years where she co-founded numerous startups including Nirvino – a #1 ranked wine app and Apple Platform Top 100 App, during its time. Meli has been recognized by *Entrepreneur Magazine* as one of five Women to Watch and as one of eight Women Leaders Who Are Disrupting Entrepreneurship. She serves on the board of UHA Health Insurance, board of regents for Chaminade University and is a 2020 Omidyar Fellow. Meli is a graduate of Punahou School and Cornell University.

Mahalo to Our Sponsors and Partners!

PRESENTING SPONSOR:



**THE QUEEN'S
HEALTH SYSTEM**
Your Lifetime Partner in Health

HAWAI'I
KAUAI
MAUI
MOLOKAI
O'AHU

SPECIAL PARTNERS:



PATSY T. MINK
CENTER FOR
BUSINESS &
LEADERSHIP

EXCLUSIVE BANKING PARTNER:



First Hawaiian Bank.

GOLD SPONSORS:



[ANTHOLOGY®]
A FINN Partners Company



SILVER SPONSOR:



SERVCO

PRINT PARTNER:



FLORAL PARTNER:



Closing General Session

Strength and Perseverance: 50 Years of Title IX

2:45 - 4:00 P.M. | CORAL III-V

50 years ago, the United States considered three landmark provisions that would grant women rights – Title IX, the Equal Rights Amendment and Roe vs. Wade. Today, only one of the three remain. During this session, we'll shed light on the incredible strength and perseverance of the women who paved the way for women's rights and challenged the status quo, and how we must continue to push boundaries for a more equitable future.



MODERATOR

Steve Petranik

EDITOR, HAWAII BUSINESS MAGAZINE

Steve Petranik has been an editor and reporter for almost four decades and now is the editor of *Hawaii Business*. Before joining the magazine in 2009, he spent 18 years as an editor at the Honolulu Star-Bulletin and five years at the Honolulu Advertiser. He's reported from six countries on three continents and his stories have appeared in the New York Times, Washington Post and Los Angeles Times.



Jill Leilani Nunokawa

FORMER RAINBOW WAHINE
BASKETBALL PLAYER &
CIVIL RIGHTS SPECIALIST

Since 1997, Jill Leilani Nunokawa has served as the Civil Rights Specialist at the University of Hawai'i at Mānoa. She graduated from the William S. Richardson School of Law in 1988, and went on to work as a Public Defender on four islands for nearly a decade before beginning her tenure at UH. She has dedicated her career to social and environmental justice, and has been recognized by the Legislature and the Hawaii Friends of Civil Rights for her work to enforce Title IX and promote equal opportunities for students participating in athletics.



Clarissa Chun

HEAD COACH, WOMEN'S
WRESTLING, UNIVERSITY OF IOWA
AND OLYMPIC MEDALIST

Clarissa Chun was named head coach of the University of Iowa women's wrestling team in 2021 – the first head coach in the history of the program. Iowa announced in 2021, that it was adding women's wrestling as an intercollegiate program, becoming the first NCAA Division I, Power Five conference institution to offer the sport. She joins the Iowa women's wrestling program from USA Wrestling, where she was an assistant coach on the women's national team from 2017-21.

During her career, Chun won five U.S. Open titles. She was a 2011 Pan American Games silver medalist and won four gold medals at the Pan American Championships. She was a runner-up at four U.S. World Team Trials and three U.S. Opens, in a career which spanned 18 years competing at the Senior level.



Nani Cockett

FORMER RAINBOW WAHINE
ALL-STAR & WNBA BASKETBALL PLAYER

Nani was born and raised on O'ahu and is a graduate of Kamehameha Schools Kapālama. She was an All-American and All-Conference Player of the Year for the University of Hawai'i Wahine Basketball team and continued to excel and grow playing basketball professionally in Europe as well as WNBA's Los Angeles Sparks' reserve team. Following her playing days, Nani formed D.ONE Basketball Inc., a nonprofit helping youth through basketball.

Currently she is realtor for BHGRE Advantage Realty for the last 8 years. With her partner Tahiti Reed, they form a knowledgeable and local super team that has been top 3% nationwide for multiple years now. Educating new homeowners in the beauty and sacredness of our 'āina is what makes this team different from others.



QUEEN'S INTEGRATIVE WELLNESS

Healing for mind, body, and spirit.

The Queen's Medical Center blends the very best advanced medicine with the evidence-based holistic approaches of Integrative Wellness to promote the healing of mind, body, and spirit. Integrative therapies are offered as a part of our hospital service, as well as to oncology and surgical outpatients.

AROMATHERAPY

GUIDED IMAGERY

MINDFULNESS MEDITATION

BIOFIELD THERAPIES



**THE QUEEN'S
HEALTH SYSTEM**

HAWAI'I | KAUAI | MAUI | MOLOKAI | O'AHU

CALL 808-691-4138 OR VISIT WWW.QUEENS.ORG