

20  
24

OCTOBER 11,  
2024

# Ma'ine

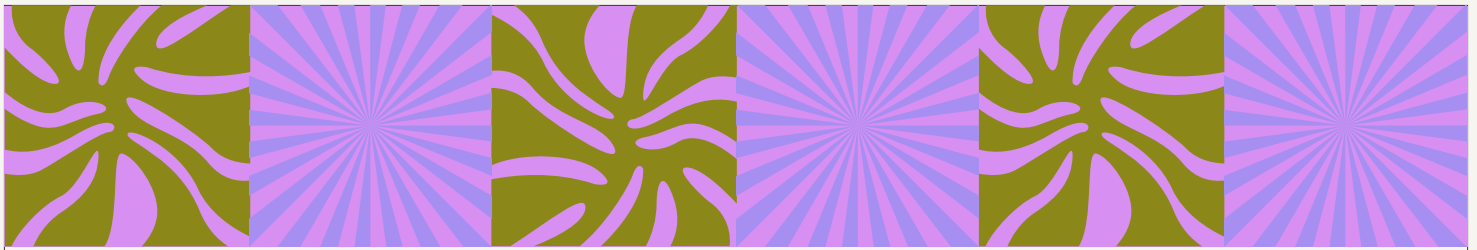
## Forum

PRESENTED BY



THE QUEEN'S  
HEALTH SYSTEMS

HawaiiBusiness  
magazine



## FRIDAY, OCTOBER 11, 2024

7:30–8:30 A.M.	<b>REGISTRATION, NETWORKING &amp; CONTINENTAL BREAKFAST</b>	CORAL LOUNGE
8:30–9:45 A.M.	<b>OPENING GENERAL SESSION: OPENING REMARKS &amp; KEYNOTE ADDRESS</b>	CORAL BALLROOMS III-V
10:00–11:00 A.M.	<b>MORNING SESSIONS I:</b> <ul style="list-style-type: none"> <li>• WOMEN ON THE CUTTING EDGE OF TECHNOLOGY AND ARTIFICIAL INTELLIGENCE</li> <li>• AGE ISN'T JUST A NUMBER: HARMONIZING YOUR MULTI-GEN WORKPLACE</li> <li>• SHOWING UP: THE POWER OF COLLECTIVE ACTION</li> <li>• EMPOWERHER: INTENTIONAL NETWORKING WITH LOCAL WOMEN LEADERS IN YOUR FIELD</li> </ul>	CORAL BALLROOM I  CORAL BALLROOM II  SOUTH PACIFIC I-II SOUTH PACIFIC III-IV
11:15 A.M. – 12:15 P.M.	<b>MORNING SESSIONS II:</b> <ul style="list-style-type: none"> <li>• HOW TO NEGOTIATE FEARLESSLY</li> <li>• BECOMING YOUR BEST SELF</li> <li>• SILENCING THE INNER CRITIC</li> <li>• LET'S TALK STORY: DIVERSE PERSPECTIVES IN ROUNDTABLE CONVERSATIONS</li> </ul>	CORAL BALLROOM I CORAL BALLROOM II SOUTH PACIFIC I-II SOUTH PACIFIC III-IV
12:30–1:30 P.M.	<b>NETWORKING LUNCH &amp; EXPO</b> <ul style="list-style-type: none"> <li>• NETWORKING LUNCH</li> <li>• NETWORKING EXPO</li> </ul>	CORAL BALLROOMS III-V CORAL LOUNGE
1:30–2:30 P.M.	<b>AFTERNOON SESSIONS:</b> <ul style="list-style-type: none"> <li>• NAVIGATING AMBITION: FINDING FULFILLMENT IN YOUR EVOLVING CAREER</li> <li>• LEADING THROUGH CRISIS</li> <li>• CULTIVATING THOUGHT PARTNERS: TRANSFORMING EMPLOYEES INTO INNOVATORS</li> </ul>	CORAL BALLROOM I  SOUTH PACIFIC I-II SOUTH PACIFIC III-IV
2:45–4:00 P.M.	<b>CLOSING GENERAL SESSION</b> Grace, Grit & Tradition – Talk Story and Performance by the Miss Aloha Hula honorees from 2021-2024	CORAL BALLROOMS III-V

# Map

## SOUTH PACIFIC BALLROOM III-IV

**10:00 A.M.**

EmpowerHER: Intentional Networking

**11:15 A.M.**

Let's Talk Story: Diverse Perspectives in Roundtable Conversations

**1:30 P.M.**

Cultivating Thought Partners: Transforming Employees Into Innovators

## CORAL BALLROOM II

**10:00 A.M.**

Age Isn't Just a Number: Harmonizing Your Multi-Gen Workplace

**11:15 A.M.**

Becoming Your Best Self

**1:30 P.M.**

Take Action: Protecting Women's Rights and Innovation

## PARKING VALIDATION

at Hawaii Business Magazine expo booth

**7:30-8:30 A.M.**

Registration, Expo & Networking

**7:30 A.M.-3:00 P.M.**

Expo & Networking

## SOUTH PACIFIC BALLROOM I-II

**10:00 A.M.**

Showing Up: The Power of Collective Action

**11:15 A.M.**

Silencing the Inner Critic

**1:30 P.M.**

Leading Through Crisis

## CORAL BALLROOM I

**10:00 A.M.**

Women on the Cutting Edge of Technology and Artificial Intelligence

**11:15 A.M.**

How to Negotiate Fearlessly

**1:30 P.M.**

Navigating Ambition: Finding Fulfillment in Your Evolving Career

## GENERAL SESSION: CORAL BALLROOM III-V

**8:30 A.M.**

Keynote Speaker: Sheela Subramanian

**12:30 P.M.**

Networking Lunch

**2:45 P.M.**

Closing General Session: Grace, Grit, & Tradition

## HIBISCUS ROOM

**10:00 A.M.**

Special Leadership Alliance Session

**11:15 A.M.**

CEO Roundtable (Closed Door Invite-Only Session)

## KEY:

(PS) - Parking Pay Station

♂ ♀ - Restroom

QUEEN'S WOMEN'S HEALTH SERVICES

# A doctor who treats me like 'ohana.



We offer comprehensive care for women of all ages across Hawai'i. From breast and bone health to maternity services and more, we provide optimal care through our cutting-edge diagnostics and treatments.

We focus on wellness and prevention to make sure you and your 'ohana are getting the care you deserve. We work with you to help you through some of life's most important times. As a patient of The Queen's Health Systems, you are a part of our 'ohana.

## SERVICES INCLUDE:

- Gynecology and Obstetrics
- Menopause Management
- Incontinence and Pelvic Floor Conditions
- Minimally Invasive Surgery
- Gynecologic Cancer
- Breast Health
- Prenatal Care
- Maternity Services
- Obstetric Ultrasound
- Family Planning Services
- Gender Affirming Care



SCAN THE  
QR CODE  
TO FIND CARE  
NEAR YOU



**THE QUEEN'S  
HEALTH SYSTEMS**  
Your Lifetime Partner in Health

HAWAII  
KAUAI  
MAUI  
MOLOKAI  
O'AHU

## LETTER FROM OUR PUBLISHER



**HawaiiBusiness**  
magazine

Aloha,

The Wahine Forum is always one of the year's highlights for me.

It gives me a chance to soak in the wealth of ideas, inspiration and energy that permeates this all-day event. I connect with long-time friends, meet interesting women for the first time and come away with a basket of things to try in my work and my life.

This year's theme is "Leading with Legacy" – a tribute to the women all around us who are shaping the future with their leadership and diverse perspectives.

The success of the Wahine Forum continues to be driven by the incredible team at *Hawaii Business Magazine* and by our partners, especially our presenting sponsor, The Queen's Health Systems.

Mahalo also to our banking partner, American Savings Bank, and to our Special Partners, YWCA and La Pietra Hawai'i School for Girls.

This digital program is your guide to this very full day. It tells you about the more than six dozen speakers and panelists plus when and where you can hear them share their stories, expertise and wisdom.

But those speakers and panelists should not be the only people you listen to. Meaningful insights and inspiration will also come from your fellow attendees – both those familiar to you and those you have never met before. Take advantage of those networking opportunities before, between and after sessions.

A handwritten signature in black ink that reads "Steve Petranik". The script is fluid and cursive.

Steve Petranik  
Editor and Executive Publisher  
Hawaii Business Magazine

## LETTER FROM OUR PRESENTING SPONSOR



**THE QUEEN'S  
HEALTH SYSTEMS**

Aloha and welcome to the 2024 Wahine Forum!

The Queen's Health Systems is delighted to be celebrating its 15th consecutive year as the Presenting Sponsor of the Wahine Forum. Each year, this wonderful event draws inspiring women from various backgrounds and career paths to share their unique experiences with each other.

At Queen's, 70% of our workforce of 9,400+ employees are wahine, so this forum is especially meaningful to us. As an ali'i-founded organization dedicated to the well-being of Native Hawaiians and all the people of Hawai'i, we support community events that promote personal wellness and professional growth.

This is an exciting time for our organization as we continue to increase access to vital health care services throughout the state. We strive to be Hawai'i's lifetime partner in health, providing comprehensive and compassionate care throughout your wellness journey – from pediatrics to geriatrics and everything in between.

Many of our Queen's caregivers will be taking part in this year's forum. During the Opening General Session, you'll hear from **Stephany Vaioleti**, President of Queen's North Hawai'i Community Hospital. We'll also have a breakout session titled **Becoming Your Best Self** where we'll share practical strategies and insights on balancing professional responsibilities and personal well-being. Finally, don't forget to stop by our exhibit tables in the expo area where you'll find valuable information, games, and giveaway items from our **Women's Health, Pediatrics, Cardiology, Virtual Care**, and **West O'ahu** teams.

We hope you'll enjoy the energy and enthusiasm shared by all the speakers and attendees. Mahalo to *Hawaii Business magazine* and our valued partners for supporting this dynamic gathering of wahine in Hawai'i.

Aloha,

Jason Chang  
President and CEO  
The Queen's Health Systems

## LETTER FROM EXCLUSIVE BANKING SPONSOR



Aloha,

American Savings Bank (ASB) is honored to be the exclusive banking partner of this year's Wahine Forum. For nearly 100 years, ASB has served Hawai'i's residents, businesses and communities with a commitment to building a brighter future for generations to come.

With 65 percent of our workforce and nearly half of our executives being wahine, we know first-hand the tremendous feats women can accomplish when they are provided the right support and opportunities.

We believe in the power of women supporting women. ASB has empowered female leaders and championed causes like YWCA's Dress for Success, Habitat for Humanity's Wahine Build and Patsy T. Mink Leadership Alliance. We're also one of the first supporters of the Safe Spaces and Workplaces initiative.

Mahalo, Hawaii Business Magazine, for continuing to uplift women leaders through events like the Wahine Forum and forging a path to a more equitable future. To all Wahine Forum participants, thank you for joining us today. We hope you leave the event with fresh perspective, an expanded network of strong women and the confidence in knowing that we are truly better when we work together.

Malama pono,

Ann Teranishi  
President and Chief Executive Officer  
American Savings Bank

## LETTER FROM OUR SPECIAL PARTNER



For 60 years, La Pietra – Hawai'i School for Girls has been empowering young women to lead lives of purpose. Our longstanding partnership with the Wahine Forum, a dynamic space for Hawaii's female leaders, reflects our shared commitment to uplifting the next generation of women. Our founders, Lorraine Day Cooke and Barbara Cox Anthony, were visionary leaders who understood the importance of providing access to quality education for girls. They believed that representation and empowerment are powerful forces for change—a belief that continues to guide our mission today as we nurture future female leaders to make their mark on the world.

At La Pietra, we are dedicated to empowering young women to envision meaningful futures, and we celebrate the unique strengths of each student, equipping them with the tools to flourish and make meaningful contributions. We believe that it's vital for our students to see influential women in our community taking action, uplifting one another, and making a difference, inspiring them to follow in their footsteps and create a lasting impact.

On behalf of La Pietra – Hawai'i School for Girls and future female leaders, mahalo!

With Aloha,

A handwritten signature in black ink that reads "Jennifer M. Grems".

Jennifer Grems  
Head of School  
La Pietra – Hawai'i School for Girls



## LETTER FROM OUR SPECIAL PARTNER



eliminating racism  
empowering women  
**ywca**  
O'ahu

PATSY T. MINK  
CENTER FOR  
BUSINESS &  
LEADERSHIP

Welcome to 2024 Wahine Forum!

Thank you for making time to invest in yourself today, because you are worth it. One day out of your work schedule to focus on your learning, networking, socializing and inspiration. That is what Wahine Forum is about.

Thank you *Hawaii Business* for having us as your nonprofit partner again this year. The mission of Wahine Forum is so closely aligned with our mission and we are honored to be part of this valuable event.

I hope you will take the time to review the list of incredible women leaders who are making themselves available on this day. Their participation speaks to the value of Wahine Forum and reflects their support for creating a safe space for women to gather, learn and connect. Thank you to all the speakers for paying it forward to together build a community of support, care and resilience for women so that we all can lean on each other.

Women's leadership has been and still is what we focus on at YWCA O'ahu, together with women's economic advancement and entrepreneurship. We will continue our service to our community to the best of our ability as your trusted resource and a go-to place so that you can pursue and reach your goals in both your professional and your personal life. Thank you for letting us be your partner in your life journey.

At the end of the day, I hope your heart feels warm, your brain feels challenged and stimulated, and you leave the venue with a big smile. Enjoy the conference!

Noriko Namiki  
CEO, YWCA O'ahu

# Better Together.

At American Savings Bank, we believe in the power of women supporting women. We've seen firsthand the amazing things women can achieve when they're empowered with the right tools and opportunities to reach their highest potential. We're at our best when we work together.

**65%**

**WAHINE  
WORKFORCE**



NEARLY  
**50%**

**FEMALE EXECUTIVE  
LEADERSHIP TEAM**

**1** **WOMAN CEO**



**100%**

**COMMITTED TO  
EMPOWERING WOMEN**



EQUAL HOUSING  
LENDER NMLS #423168  
Member FDIC  
© 2024 American Savings Bank, F.S.B.



**AMERICAN**  
Savings Bank

# EXPERIENCE LA PIETRA

## October 17

**Visit La Pietra Day | 8am-3pm**

Prospective students can immerse themselves in the vibrant life of a La Pietra girl by joining our dynamic classes for a day.

## November 2

**Open House | 2-4pm**

Discover the unique advantages of an all-girls' education! Learn about our nurturing community and engage with students, parents, and faculty members.



*Scan to learn more about our all-girls' community for grades 6-12 by registering for an Admissions Event!*





## LETTER FROM OUR CEO ROUNDTABLE SPONSOR



Aloha,

Atlas Insurance Agency is incredibly proud to sponsor this year's Wahine Forum. As we continue to grow and innovate, it's crucial to recognize the vital role wahine leaders play in our success, particularly here in Hawaii. Our state's history is rich with strong female figures who have shaped our islands with wisdom and resilience.

At Atlas, we have seen firsthand how women leaders bring diverse perspectives that foster innovation, collaboration, and growth. Their contributions are not just beneficial; they are essential. They bring a unique blend of empathy, creativity, and strategic thinking that drives our success and enriches our culture and success.

Hawaii's spirit of aloha teaches us to embrace diversity and inclusion. By supporting and uplifting our wahine leaders, we honor this tradition and build a stronger, more vibrant future for our community.

With Aloha,

Chason Ishii | President, Atlas Insurance Agency

## LETTER FROM OUR GOLD SPONSORS



At Alaska Airlines, we believe that great service begins with great people. Our employees reflect our core values: doing the right thing, being kind-hearted, and delivering remarkable performance. We are committed to fostering their personal and professional growth through leadership development, skills training, and empowerment—all of which contribute to our collective purpose of creating an airline people love.

We are honored to support the Wahine Forum, a pivotal event that nurtures the next generation of Hawai'i's women leaders. This forum brings together female (and male) executives, entrepreneurs, and professionals to learn, connect, and inspire one another. Mahalo to Hawai'i Business for championing this important annual gathering.

A special acknowledgment to Robin Kobayashi, senior vice president of human resources at Hawaiian Airlines, who is participating in today's outstanding line-up of speakers. Together, we are lighting the way toward a brighter future for Hawai'i.



Since 1969, ALTRES has had the privilege of partnering with thousands of Hawai'i employers and supporting them with payroll, staffing, benefits administration, compliance, and more. And we are passionate about supporting the growth and success of women in our community. Over 700 of our clients are women-owned businesses and we employ thousands of women as in-house and worksite employees. We are proud to once again sponsor the Wahine Forum – an event that brings together women from around our state to learn and grow. Mahalo to Hawaii Business magazine, as well as all the speakers and attendees, for your inspiration and leadership.

Linda Ling | Chief Financial Officer, ALTRES

## LETTER FROM OUR GOLD SPONSORS

[ANTHOLOGY]



Wahine Forum continues to be a highlight of the year for Anthology FINN Partners. We are honored to be a sponsor of the 2024 event and look forward to being inspired by our fellow female executives and leaders in the business and non-profit community.

Anthology FINN Partners is proud that women hold 65 percent of the leadership positions in the organization. Our female leaders do what it takes, holding nothing back as they work as change agents for our company and our clients.

Our team provides best in class marketing services for Hawaii and the Pacific Region with our combination of creativity, strategy, hands-on partnership, and specialized expertise.

Mahalo Hawaii Business for this opportunity.

Wenona Harris | Senior Partner



Big Island Candies is honored once again to support the Wahine Forum. When Big Island Candies was established in 1977, it was born from humble beginnings in a small warehouse in Hilo's industrial area, with only a chocolate melter and a shrink wrap machine. Turns out, we also had these important ingredients for the recipe for success: pride, perseverance, and a group of intelligent, inspiring people to help us get to where Big Island Candies has grown to today.

The passion for producing a variety of high-quality products, with that same pride and perseverance by our family of dedicated employees, is still paramount. And all along the way, it's been our pleasure to be able to connect with, and build a community of, amazingly loyal and supportive customers.

This is one of the reasons why the Wahine Forum resonates so strongly with us—it's an invaluable opportunity to connect, and build community. To all who are attending this year's conference: Wishing you nothing but success today, and all the days ahead.

Sherrie Ann E. Holi | President and Chief Operating Officer, Big Island Candies



E 'eleu mai kākou! This phrase, which can be translated as a call to move swiftly, is reminiscent of Queen Emma's rallying cry to her weary companions during their challenging journey to Maunakea.



Hawaii Dental Service (HDS) is proud to once again sponsor the uplifting Hawaii Business Magazine Wahine Forum. The Wahine Forum gives women a space to be their most authentic selves and find inspiration, connection, rejuvenation, and empowerment for their own careers and journeys.

As you continue upon your own journey of professional growth, we encourage you to take control and seize the day! Shape your future and claim the life you deserve. E 'eleu mai kākou! The future is ours, mana wāhine!

Diane S.L. Paloma, PhD | President & Chief Executive Officer, Hawaii Dental Service (HDS)

## LETTER FROM OUR GOLD SPONSORS



Aloha, Welcome to the 2024 Wahine Forum!

HMSA is proud to be a sponsor of this fantastic leadership and networking event for another year.

This year's theme, "Leading with Legacy," is a special one. You are all living examples of the legacy of strong, resilient, and inspiring women who nurtured your growth as individuals. You may be similarly paying it forward for the next generation.

It's remarkable to reflect on how much progress we've made toward a better future. It was only 104 years ago when Congress granted women the right to vote. That was in 1920. We've come so far since then, with many remarkable women to thank for paving the way.

In the 1930s, a nurse named Margaret Catton proposed a nonprofit community-based organization that would help Hawaii residents pay for medical care, which was realized when the Hawai'i Medical Service Association opened for business in 1938. And today, 86 years later, the majority of the employees and executive leaders in our company are comprised of women, committed to carrying on that legacy.

Thank you for being a part of the momentum that fuels progress. And mahalo to *Hawaii Business Magazine* for hosting this empowering event.

Mark M. Mugiishi, M.D., F.A.C.S. | President and Chief Executive Officer, Hawai'i Medical Service Association



Aloha 2024 Wahine Forum Attendees,

On behalf of KHON2, we are delighted to support Hawaii Business Magazine and the prestigious Wahine Forum. This impressive event is an opportunity to highlight Hawaii's talented women in leadership and recognize their valuable contributions to our community. In addition, the Wahine Forum provides an important platform for women in business to connect with peers, learn from others who have gone before, and share similar challenges and solutions.

This year, we are so proud to see our own KHON2 On-Air Talent involved with the Wahine Forum. We are very proud of Life-style Host Kelly Simek and News Anchor, Gina Mangieri, who are both part of the Wahine Forum. Kelly is host to Hawaii's #1 lifestyle show, Living808, and was previously our Morning Weather Anchor, while Gina has served as award winning KHON2 News Anchor and our Investigative Reporter. Both ladies have contributed to KHON and served the Hawaii community for the last decade. They are both extremely talented and work hard every day to provide news, information, and content to our viewers. We are excited that they will be involved and represent our Station in this important gathering of women leaders.

On behalf of KHON2, we are committed to uplifting our community and supporting the growth of Hawaii's remarkable women, whose leadership is shaping the future of business in Hawaii.

Sincerely, Kristina Lockwood | KHON2 Vice President & General Manager



UHA Health Insurance is honored to sponsor the 2024 Wahine Forum.

As the only health insurer in Hawai'i founded by physicians, we are dedicated to promoting prevention and wellness. We understand that good health begins in our homes, schools, workplaces, and communities, where factors like support networks and social connections play a crucial role.

At UHA, we are passionate advocates for integrating self-care into effective leadership. We recognize that while health is essential for peak performance, it's often challenging to prioritize amidst our many roles as supporters, mentors, leaders, and caregivers. By taking time for self-care, you enhance your own well-being and inspire others to do the same.

At our own workplace, UHA is committed to empowering our female leaders by supporting all women in realizing balance, better health and ultimately, improved productivity and well-being.

Mahalo to Hawaii Business magazine for this opportunity to share our vision with the women of Hawai'i. May you look forward to a day of learning and empowerment. Enjoy the conference!

Aloha, Howard Lee | President and CEO, UHA Health Insurance

## LETTER FROM OUR SILVER SPONSORS



The Stressed to Strong conference achieved a high bar - delivering valuable content for our entire team. For myself and our HR director, both keynote speakers and the panels we were part of underscored that we are moving AlohaCare in the right direction. Throughout the afternoon, we heard common challenges and relatable anecdotes. Equally important, the speakers shared personal stories, helpful advice and tangible ideas for optimizing our employee experiences. The insightful discussions validated our hard work to keep shaping the environment that is needed for this moment in time and the coming years.

Francoise Culley-Trotman | AlohaCare CEO



In 2010, I launched the Bikinibird blog, quickly gaining 40,000 subscribers. Seeing its potential, I expanded into an online shop and expanded to five stores on O'ahu and Maui. In 2017, I acquired Goodmerch Supply, a promotional product company. Focused on branding with good design in mind.

As President and CEO, my fashion and design background has allowed me to stay innovative and grow within the industries. Our talented Honolulu and overseas team have built a culture that nurtures young local talent and enables our small company to thrive nationally. Looking ahead, our goal is to focus on sustainable development and mentor the next generation of talent in Hawai'i. The Wahine Forum aligns with our passion for supporting and growing professional women in Hawai'i.

Tiana Gamble | President & CEO, Goodmerch Supply

## LETTER FROM OUR WAHINE LOUNGE PARTNER



Explore, experience and imagine at the Wahine Lounge!

CEI Hawai'i is proud to be the official sponsor of the Wahine Lounge for the sixth consecutive year. Stop by the lounge to explore the latest trends and styles in office furniture, meet our CEI team, and unlock the possibilities of your workplace environment.

We believe every project is a unique journey. By partnering with over 100 diverse brands, we ensure that each solution is tailored to meet the specific needs of our clients. In much the same way, the Wahine Forum brings together a remarkable community of women whose diversity is a source of strength and innovation.

We are deeply grateful to Hawai'i Business for curating such an inspiring event and extend our admiration to the women working with vision, resilience, and courage to uplift the Wahine community.

Aloha, Michael Yasui | CEO & Founder, CEI Hawai'i

## NONPROFIT PARTNERS

Aloha United Way  
BBB Great West & Pacific  
Chamber of Commerce Hawaii  
Friends of Hawaii Charities  
Hawaii Children's Action Network  
Hawaii Employers Council

Hawa'i FoundHer  
Junior League of Honolulu  
Nurturing Wāhine Fund  
Organization of Women Leaders  
PBS Hawai'i  
Read to Me International Foundation



*patsy t. mink*  
**LEADERSHIP  
ALLIANCE**



*women committed to personal growth,  
professional impact and community leadership*

**MEET OUR COHORT 9**  
*mink leaders*

**MICHELLE AKE**

+ Founder & CEO, Malu Productions, Inc.

**NOHEA BERNARD**

+ VP, Service & Support Manager, Bank of Hawai'i

**VICTORIA BOREN**

+ Senior Associate, Booz Allen Hamilton

**MELISSA FITZGERALD**

+ Director of VMO and Procurement, HMSA

**TAMI FUJIWARA**

+ Vice President & Service Manager, First Hawaiian Bank

**DOMONICA GLENN**

+ CEO & Founder, Growing Patch 24-Hour  
Children Academy

**AMANDA GUERRA**

+ Vice President and Director of Internal Audit,  
Hawaii National Bank

**KHRYSTYN HUYNH**

+ Senior Marketing Manager, Hawaiian Telcom

**SHELLI IHORI**

+ Director, Workforce Development, Hawaii Pacific Health

**JENNIFER KUMURA**

+ Product Design Manager, Servco Pacific Inc.

**FLORELEI LOPEZ**

+ Assistant Vice President, Branch Support Manager,  
Central Pacific Bank

**MANDY MAHUKA**

+ Flight Chief, Military Personnel Flight,  
Hawaii Air National Guard

**CARA ODO**

+ Architect, NAVFAC Hawaii

**BRANDY OKI**

+ Chief Administrative Officer, HawaiiUSA FCU

**ANNALISE PASALO**

+ Vicar, Emmanuel, St. Matthew's &  
Calvary Episcopal Churches

**LISA-MARIA PRIESTER**

+ Principal, Director of Interior Design, WCIT Architecture

**MOLLY SCHMIDT**

+ Regional Chief Operating Officer, American Red Cross

**KARI SHINTAKU**

+ Vice President, Quality Improvement,  
Centene Corporation / 'Ohana Health Plan

**KARWIN SUI**

+ Communications Manager, American Savings Bank

**KIMBERLY VAITUULALA**

+ Superintendent, System Operations Control Center,  
Hawaiian Electric – Maui County

**KAHEALANI WINCHESTER**

+ Associate, Project Manager, G70

**PATSY T. MINK**  
**CENTER FOR**  
**BUSINESS &**  
**LEADERSHIP**  
WOMEN'S BUSINESS CENTER

eliminating racism  
empowering women  
**ywca**  
O'ahu

PH 808.695.2635 | EM [mcb1@ywcaohu.org](mailto:mcb1@ywcaohu.org)  
1040 Richards Street Suite 105, Honolulu, Hawaii 96813

*learn more*



[MCLHAWAII.ORG](http://MCLHAWAII.ORG)



# Atlas Insurance Agency is a proud sponsor of Hawai'i Business Magazine's Wahine Forum



Your Navigation Partner.

# Sheela Subramanian

8:30-9:45 A.M. | CORAL BALLROOM III-V

Sheela Subramanian is an entrepreneur, speaker, and bestselling author of "How the Future Works." She is the co-founder of Future Forum, a research consortium studying the changing nature of leadership and work. As a champion for gender equity in the workplace, Sheela's perspective is cited in publications such as *The New York Times*, *Wall Street Journal*, *Harvard Business Review*, and *Fast Company*. She holds over 20 years of experience building and leading global teams at Google, Slack, and Salesforce. Sheela earned her BA from Stanford University and MBA from Harvard Business School. A mother to two magical daughters, she is a vocal advocate for girls in STEM and sports.



## KEYNOTE

**Sheela Subramanian**  
ENTREPRENEUR,  
INVESTOR, AND  
BESTSELLING  
AUTHOR OF  
"HOW THE FUTURE  
WORKS"



**EMCEE**  
**Kelly Simek**  
KHON2

## OPENING REMARKS FROM



**Steve Petranik**  
EDITOR &  
EXECUTIVE  
PUBLISHER,  
HAWAII BUSINESS  
MAGAZINE



**Stephany Vaoleti**  
PRESIDENT,  
QUEEN'S  
NORTH HAWAII  
COMMUNITY  
HOSPITAL



**Noriko Namiki**  
CEO, YWCA  
O'AHU



**Ann Teranishi**  
PRESIDENT & CEO,  
AMERICAN SAVINGS  
BANK

## KEYNOTE INTRODUCTION BY LA PIETRA STUDENTS



**Abigail Moe**  
STUDENT, LA PIETRA -  
HAWAII SCHOOL  
FOR GIRLS



**Heather Smith**  
STUDENT, LA PIETRA -  
HAWAII SCHOOL  
FOR GIRLS

## PERFORMANCE BY LA PIETRA - HAWAII SCHOOL FOR GIRLS





# Leading the way with care

Whether you're taking off or touching down, we've got you covered.

*Alaska*<sup>®</sup>  
AIRLINES



We're proud to support Hawai'i Business Magazine.





# We understand that the hardest thing about HR is understanding HR.

---

Human Resources is complicated. There are changing labor laws to keep track of, payroll taxes to calculate, employees to train, and benefits to administer.

Fortunately, you don't need to know HR, you just need to know someone who does. To find out how we can help simplify running your business, call us at **(808) 791-4900** or visit us at **[simplicityHR.com](https://simplicityHR.com)**

# Women on the Cutting Edge of Technology and Artificial Intelligence

10:00 – 11:00 A.M. | CORAL I

Dive into the future of work with visionary and imaginative women in business and education who are leading the charge in digital media and artificial intelligence. Explore their creative ideas and groundbreaking projects, and learn what it means to invest in the next generation, empowering them to stay, live, and thrive while making a global impact. Join us to understand the transformative changes ahead and how to stay ahead of the curve.



MODERATOR

**Hannah Grady-Williams**  
CHIEF REBEL, d'SKILLS

Hannah Grady Williams is the Chief Rebel at d'Skills, where students get AI-powered! Her board includes Ted Dintersmith; and Chris Lochhead, who calls her "one of the most important voices in education today." Hannah's the author of the top-selling book, "A Leader's Guide to Unlocking Gen Z," TEDx speaker, and a top 10% charting podcast host.



**Yolanda Lau**  
Founding Board Member,  
Hawai'i Center for AI

Yolanda Lau, a Founding Board Member of the Hawai'i Center for AI (HCAI), is an MIT-trained engineer, serial entrepreneur, executive coach, writer, and advisor. Her expertise includes thought leadership in the future of work, education, and 21st-century skills, as well as integrating mindfulness and positive psychology into the workplace and classroom.

As an advisor to Vitalize VC, a venture capital firm investing in the work revolution, Yolanda is at the forefront of shaping the future of work. Through HCAI, Yolanda aims to ensure AI is used responsibly to grow our local economy and benefit all of our residents. Her vision for Hawaii's future is one where AI is harnessed to build a more sustainable, resilient, prosperous, and diverse economy while preserving the islands' unique cultural heritage.



**Mahealani Jackson**  
Senior, Kamehameha  
Schools

Mahealani Jackson, a senior at Kamehameha Schools, is on track to earn her bachelor's degree in business at 18. At just 16, she founded Optimize Media, an innovative AI-powered marketing agency. Optimize Media revolutionizes small to medium businesses' online presence, blending the latest in artificial intelligence with Mahealani's dynamic Gen-Z insight.



**Jazmyne Viloria**  
UH Shidler Student/  
Former Maui HS grad

Jazmyne Faith Viloria is the owner of Sew Local LLC and a business administration student at the University of Hawai'i at Mānoa, pursuing her BBA in Marketing. Born and raised in Kahului, Maui, she has been involved in storytelling, journalism, and creative media since the age of 11. Leveraging her creative background, Jazmyne founded Sew Local, where she designs and creates apparel and accessories inspired by local values and stories, reminding others of their upbringing and connection to Hawai'i.



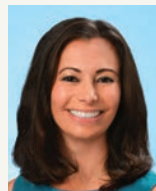
**Gigi Kiyabu**  
Senior, Mid-Pacific  
Institute

Gigi Kiyabu is a senior at Mid Pacific Institute studying Human-Centered Design. As an executive member of the Hawaii Youth Food Council, Gigi engages in policy development and systems change efforts within Hawaii's agriculture and food systems. She is leveraging technology and AI as force multipliers to further her work.

# Age Isn't Just a Number: Harmonizing Your Multi-Gen Workplace

10:00 - 11:00 A.M. | CORAL II

Join us for an engaging discussion on the benefits and opportunities of leading and collaborating in a multi-generational workplace. Hear stories of successes, lessons learned and strategies to leverage unique skillsets within your team. Discover how to motivate your team by connecting with generational priorities and values, foster a feedback-rich culture, build trust, communicate effectively, and resolve conflicts. By the end of this session, you'll be energized to adapt your communication style to meet the diverse needs of your workplace and leave with actionable ideas to lead a more cohesive and productive multi-generational team.



**MODERATOR**

**Marissa Page**

ORGANIZATIONAL DEVELOPMENT  
FACILITATOR, AMERICAN SAVINGS BANK

With over 12 years of experience in leadership development and instructional design, Marissa is dedicated to equipping leaders with personal and professional development tools and creating transformative learning experiences. In her current role, she promotes ASB's values by enhancing teammate engagement through training on topics like giving and receiving feedback, communication and collaboration. She has led several of ASB's development programs aimed at helping teammates build capacity and reach their full potential.

Marissa supports ASB's women-focused initiatives and has mentored many young wahine. Prior to ASB, she held instructional and leadership positions at various educational institutions in California. Marissa holds a Master of Science in Education from Dominican University of California, where she was honored as the Outstanding Graduate Student, and graduated Summa Cum Laude with a Bachelor of Administration in Humanities and Cultural Studies.



**Beth Whitehead**

EXECUTIVE VICE PRESIDENT &  
CHIEF ADMINISTRATIVE OFFICER,  
AMERICAN SAVINGS BANK

As Executive Vice President and Chief Administrative Officer of American Savings Bank (ASB), Beth Whitehead champions ASB's award-winning teammate experience and workplace culture. In her role, Beth leads ASB's Human Resources, Learning and Development, Communications, Community Advancement, Corporate Real Estate, Corporate Security, Facilities Management, Bank Secrecy Act, Internal Audit, and Legal teams. She also oversees ASB's Operations team, which is responsible for delivering integrated operations solutions and improving operational efficiency. Her teams develop benefits, programs and opportunities that attract, develop and retain top talent, while helping to protect and promote ASB's unique brand in the community.



**Maya Rogers**

CEO, TETRIS

Maya Rogers is President and CEO of The Tetris Company, where she has led the worldwide business initiatives of the Tetris® brand since 2007. Maya's expertise encompasses game development, global licensing, brand management, merchandising, and IP enforcement. Prior to heading Tetris, she steered cross-culturalization and development efforts for Tetris Online China, Sony Computer Entertainment America and American Honda. Maya co-founded Blue Startups in 2012, and serves as Partner.



**Sherry Menor-McNamara**

PRESIDENT & CEO, CHAMBER OF  
COMMERCE HAWAII

Sherry Menor-McNamara became the youngest and first female President and CEO of the Chamber of Commerce Hawaii in 2013. Under her leadership, the Chamber won the 2018 Association of Chamber of Commerce Executives (ACCE) State Chamber of the Year. She has worked for companies like Sony and Estee Lauder and served in government roles, including with U.S. Senator Daniel Akaka. A graduate of the University of Hawaii and the Omidyar Fellows Leadership Program, Sherry holds a J.D., MBA, and several certifications. She serves on boards such as the Hawaiian Humane Society and has been honored by various organizations, including Junior Achievement Hawaii.

# Showing Up: The Power of Collective Action

10:00 - 11:00 A.M. | SOUTH PACIFIC I-II

Now more than ever, showing up for our community is crucial. This session highlights the importance of community building and the profound impact individuals can have through their actions. Join a panel of local leaders who are actively taking care of our community, and learn how their individual choices have mobilized significant change. Through engaging stories and firsthand accounts, you'll discover the ripple effects of your contributions and explore ways to support your community effectively. Whether you're a seasoned volunteer or just beginning to explore ways to give back, this session will inspire you to reflect on your role within your community and motivate you to take meaningful action. Be inspired by real-life stories of dedication and learn how genuine community engagement transcends traditional frameworks, focusing on authentic, grassroots connections for real, sustainable impact.



**MODERATOR**

**Mea Aloha Spady**

EXECUTIVE DIRECTOR, THE KŪPA'A NETWORK

Mea was born and raised in the moku of Ko'olauloa on O'ahu. A descendant of Kānaka Maoli from Hawai'i Island, Atlantic Ocean sailors, and Japanese immigrants, her life has been informed by a sense of inclusive community and a commitment to service. She started volunteering in the community when she was nine years old and has served nonprofits locally, nationally, and internationally with a focus on human rights and disaster recovery. With a background in psychology and peace and conflict resolution, as well as in marketing and communications, Mea is devoted to building connections in the community for positive impact.



**Kēhau Meyer**

SENIOR PROGRAM MANAGER,  
MAUI RELIEF EFFORT, HAWAI'I  
COMMUNITY FOUNDATION

Kēhau Meyer is the Senior Program Officer for the Maui Recovery Effort and helps to lead the grantmaking program focused on distributing donations to the Maui Strong Fund. Meyer has been with HCF since 2019. She earned a master's of communication management from the University of Southern California and her bachelor of arts in sociology and anthropology from the University of Notre Dame. She currently lives in Kāne'ohe, Hawai'i with her partner and two dobermans.



**Lisa Kleissner**

CO-FOUNDER & PRESIDENT,  
KL FELICITAS AND  
CO-FOUNDER & BOARD  
CHAIR, HAWAII  
INVESTMENT READY

Lisa Kleissner works with entrepreneurs around the world researching, experimenting and investing in levers of societal and environmental change. Lisa co-founded and chairs the boards of her family foundation and Hawai'i Investment Ready – a nonprofit building Hawai'i's next inclusive economy. She is the co-founder of two global membership organizations, Toniic and Twist, working to scale collective impact and consciousness in the financial markets. Lisa graduated from Kamehameha Schools, and received her B Arch in Environmental Design from UH Mānoa.



**Shae Kamaka'ala**

DIRECTOR OF 'ĀINA  
PROTECTION, HAWAI'I LAND  
TRUST

Shae Kamaka'ala, Esq. - Born and raised in the ahupua'a of Punalu'u and Kahana, Ko'olauloa, O'ahu, Shae Kamaka'ala comes from largely a subsistence fishing family, where making imu and communal sharing carries on today. A 2005 graduate from the Kamehameha Schools, to receiving her law degree with certificates in Native Hawaiian Rights and Environmental Law from the William S. Richardson School of Law in 2014, she has worked in private and public sector on issues and projects from watershed management plans, administrative rule making, land use, and land acquisitions statewide to inform solutions for Hawai'i. Solutions grounded in the depths of indigenous knowledge and generational relationships to place.



**Dana Tokioka**

PRESIDENT, TRADEWIND  
GROUP FOUNDATION AND  
VICE PRESIDENT OF SPECIAL  
PROJECTS, ATLAS  
INSURANCE AGENCY

Dana Tokioka is Vice President of Atlas Insurance Agency. She is also President of the Tradewind Group Foundation, donating over a million a year to non-profit organizations throughout Hawaii. She utilizes her vast array of disciplines and experience to support Atlas' executive team in a variety of capacities. Prior joining Atlas in 2010 as Account Executive, her experience includes working as a corporate and real estate attorney in San Francisco and a Booz Allen Hamilton management consultant. Dana holds a Bachelors of Arts in History from Tufts University and a Juris Doctorate degree and a Master's in Business Administration degree from Georgetown University.

# EmpowerHER: Intentional Networking with Local Women Leaders In Your Field

10:00 - 11:00 A.M. | SOUTH PACIFIC III-IV

Prepare for a unique and empowering session that goes beyond traditional networking. "EmpowerHER" offers you the unique opportunity to connect and learn from local female leaders in an intimate small group setting. Seated at round tables, each table will host one mentor – a prominent figure in her field – and a small group of attendees. It's a rare chance to engage in meaningful conversations, ask questions, and build relationships with women who have excelled in their careers. Each table will feature a female leader from a different field – Financial, Legal, Construction, Entrepreneurship, Tech, Architecture, Design, Marketing, etc.



DESIGN AND BUILT  
ENVIRONMENTS INDUSTRY  
**Tracy Camuso**  
Principal, G70



ENTREPRENEURSHIP  
**Tiana Gamble**  
President & CEO, Goodmerch  
Supply and Bikini Bird



FINANCIAL  
**Alexina Chai**  
Senior Vice President,  
Director of Human  
Resources & Organizational  
Development, American  
Savings Bank



HUMAN RESOURCES  
**Alison Vasconcellos**  
Human Resources,  
Learning Specialist,  
ALTRES



MARKETING  
**Jackie Smythe**  
Senior VP  
Anthology FINN Partners



INTEGRATED MARKETING  
**Mei Jeanne Wagner**  
VP, Account Supervisor  
Anthology FINN Partners



TRAVEL & TOURISM  
**Mālia Sanders**  
Executive Director  
Native Hawaiian  
Hospitality Association





**Honoring women  
who make waves.**  
We are proud to  
be a Gold Sponsor  
of the Wahine Forum.

[ANTHOLOGY]

**FINN**  
PARTNERS

[ANTHOLOGYGROUP.COM](http://ANTHOLOGYGROUP.COM)

Advertising | Digital | PR | Research



CANDIES  
**BIG ISLAND**<sup>®</sup>

ESTABLISHED 1977



## Gifts that celebrate Hawaii's beauty & aloha

For over 45 years, we've made cookies, chocolates, and confections  
by hand using only the finest ingredients.  
Watch dedicated artisans at our Hilo Flagship Store create signature dipped  
shortbreads - and more - right before your eyes!

Hilo - Factory & Retail Gift Shop - 585 Hinano Street  
Honolulu - Ala Moana Center, Street Level 1, Center Court  
[BigIslandCandies.com](http://BigIslandCandies.com)



# How to Negotiate Fearlessly

11:15 A.M. - 12:15 P.M. | CORAL I

Negotiation is more than just closing deals—it's a powerful tool for solving problems, managing conflicts, and advancing your goals while maintaining strong relationships. In this session, you'll discover techniques and strategies that will help you navigate complex conversations, advocate for yourself, and effectively communicate your needs. Learn how to embrace discomfort, confidently express your requests, and create win-win outcomes in both personal and professional settings.



MODERATOR

**Bryn Pane'e Burkhardt**

EXECUTIVE COACH & FOUNDER, BRIGHT EVOLUTION LEADERSHIP COACHING LLC

Bryn Pane'e Burkhardt is the Founder & Principal of Bright Evolution Leadership Coaching. An Executive Coach and workplace strategist, Bryn brings a strengths-based approach to organizations, guiding business leaders to solve pressing challenges and create healthier, more productive workplace environments. Prior to starting her coaching practice, Bryn led Alumni Career Services at MIT Sloan's School of Management for 15 years. In 2022, she relocated from Boston to Honolulu to live near extended ohana and invest her energy in Hawai'i. Bryn holds a B.A. in Journalism from the UNC-Chapel Hill and an Ed.M from Harvard University's Graduate School of Education. She completed her Certified Professional Co-Active Coach (CPCC) training through the Co-Active Training Institute and is a PCC with the ICF.



**Associate Justice Sabrina McKenna**

HAWAII'S SUPREME COURT

Sabrina McKenna has been an Associate Justice of the Hawai'i Supreme Court since 2011. She graduated from the UHM and its William S. Richardson School of Law (WSRSL), where she served as editor-in-chief of the law review. She was an associate at Goodsell Anderson Quinn & Stifel, Corporate Secretary and General Counsel to Japan-based Otaka, Inc., an Instructor in Business Law at the UHM Shidler College of Business, and an Assistant Professor at the WSRSL. From 1993 to 2011, she was judge in O'ahu civil, criminal, and family courts. Justice McKenna is a lecturer at WSRSL and on various matters domestically and internationally. She serves on the Judicial Advisory Board of the George Mason University Antonin Scalia Law School Law & Economics Center's Judicial Education Program. Her honors include the American Bar Association's Margaret Brent Women Lawyers of Achievement and Stonewall awards, National Asian Pacific Bar Association's Daniel K. Inouye Trailblazer Award, University of Hawaii's Distinguished Alumnus Award, and Hawaii Women Lawyers' Outstanding Judicial Achievement Award. She has also been recognized with an Honorary Doctorate from Ryukyu University in Okinawa, as an Eminent Jurist by the Jindal Global Law School (Delhi), and by the Association of Corporate Counsel Foundation (D.C.) as a Global Women in Law & Leadership Honoree.



**Alana Kobayashi Pakkala**

CEO, KOBAYASHI GROUP

Alana Kobayashi Pakkala is the CEO of Kobayashi Group LLC, with over two decades of experience in Hawai'i real estate development. Since 2020, she has guided the development of more than 2,067 residential units, balancing 40% luxury and 60% affordable housing, which has contributed to \$2.22 billion in real estate activity. Her work spans the residential, hospitality, retail, non-profit, and government sectors, with notable projects including Park Lane Ala Moana, Hale Kālele, and Hyatt Andaz Maui. Born and raised in Hawai'i, Alana is a graduate of Punahou School and earned her degree cum laude from Georgetown University. She is dedicated to creating best-in-class sustainable projects that enhance the quality of life in the islands. Her community involvement includes serving on the Board of Directors for Kapi'olani Medical Center for Women and Children and O'ahu Transit Services Inc. Honored with the Woman of Distinction Award from the Girl Scouts of Hawai'i, Alana values integrity and collaboration in her efforts to support local communities.



**Meli James**

CO-FOUNDER, MANA UP

Meli James is the co-founder of Mana Up, a Hawaii-based business accelerator program, venture fund and retail initiative designed to diversify the local economy and build the state's next generation of consumer brands. She is also the president of the Hawaii Venture Capital Association. Born and raised in Honolulu, Meli lived in Silicon Valley for more than 10 years where she co-founded numerous startups. Meli has been recognized by Entrepreneur Magazine as one of five Women to Watch and as one of eight Women Leaders Who Are Disrupting Entrepreneurship. She serves on the board of UHA Health Insurance, board of regents for Chaminade University and is a 2020 Omidyar Fellow. Meli is a graduate of Cornell University Nolan School of Hotel Administration.

# Becoming Your Best Self

11:15 A.M. - 12:15 P.M. | CORAL II

We all strive to be healthy in our own way, both physically, mentally, and spiritually. But are we doing enough for ourselves? And what is enough? Hear from three caregivers from The Queen's Health Systems about how they try their best to balance their professional responsibilities and personal well-being. They'll share practical strategies and insights on maintaining health and wellness across all spectrums.



MODERATOR

**Trini Kaopuiki-Clark**  
President & CEO, Make-a-Wish Hawaii

As President and CEO of Make-A-Wish® Hawaii, Trini Kaopuiki Clark leads a team of 29 staff and 400 volunteers to support the organization's mission of creating life-changing wishes for children with critical illnesses. A University of Hawaii graduate, Clark is an accomplished local professional with nearly 20 years in Hawaii's television industry and more than 14 years in nonprofit leadership. She previously worked at KHON2 News, where she helped create Hawaii's first lifestyle show, Living808.



**Dr. Brita Aramaki**  
Medical Director of Geriatric Services, The Queen's Health Systems

Brita Aramaki was born in Honolulu, but grew up in California, South Carolina and Texas. She got her Bachelor of Science degree in Microbiology from the University of Texas at Austin and Masters in Public Health in Epidemiology from the University of North Texas Health Sciences Center in Fort Worth. In 2007, Brita moved back to Oahu to attend medical school at JABSOM and has been here since, subsequently completing internal medicine residency and geriatric medicine fellowship at UH. She joined Queen's in 2015 as a geriatrician and assumed the role of Medical Director of Geriatric Services in 2021. Brita is married with two young kids. In her spare time, Brita enjoys spending time with family and friends, doing creative activities with her children, binge watching TV shows, trying new cuisines, and traveling.



**Kalehua Tolentino**  
Coordinator of Native Hawaiian Health Education and Cultural Development, The Queen's Health Systems

Kalehua Tolentino, with over 40 years at The Queen's Medical Center/The Queen's Health Systems, is the Coordinator of Native Hawaiian Health Education and Cultural Development. She blends culture and science to promote holistic health and caregiver wellness, embodying her commitment to empowering her community and preserving Native Hawaiian traditions.

Kalehua highlights the vital role of culture in health and well-being and strives to inspire others to embrace their heritage as a pathway to personal and collective growth.



**Celeste Barstis**  
Clinical Operations Manager for Employee Health, The Queen's Medical Center-Manamana

Celeste W. Barstis, a registered nurse, is the clinical operations manager for Employee Health at The Queen's Medical Center-Manamana. She is passionate about promoting the health and wellbeing of caregivers. Her previous role with Queen's as an Integrative Wellness nurse allowed her to foster relaxation and non-pharmacological pain management for patients, and gave her the time with patients she was missing as an intensive care nurse. She is a certified Holistic Nurse, a Caritas Coach, a Reiki Master-Teacher, and a certified Health and Wellness Nurse Coach. She enjoys spending time with her husband and two children.

# Silencing the Inner Critic

11:15 A.M. - 12:15 P.M. | SOUTH PACIFIC I-II

Self-doubt can hinder even the most accomplished women from fully embracing their success. Maya Angelou once said, "I have written eleven books, but each time I think, Uh-oh, they're going to find out now. I've run a game on everybody, and they're going to find me out." Despite 63% of executive women reporting that they are not intimidated by being the first or only woman in the room—finding it invigorating, motivating, and inspiring—they often grapple with the fear of being exposed as an imposter. This session delves into the experiences of women who have battled self-doubt and emerged stronger. Learn practical strategies to recognize and overcome imposter syndrome, build confidence, and harness your full potential in the business world.



MODERATOR

**Yunji de Nies**

Yunji de Nies co-hosts Spotlight Now, a live weekly interview program that airs on Hawaii News Now. She also hosts the public affairs programs Insights and Kakou: Hawaii's Townhall on PBS Hawai'i. She previously hosted and produced Spotlight Hawaii, a Facebook livestream show that ran on the digital platforms of the Honolulu Star-Advertiser, and is part of the team that launched daily news videos for the Honolulu Star-Advertiser Digital Billboard Network.

For five years, Yunji anchored the evening news at KITV, the Honolulu ABC affiliate, and before that worked as a White House and National Correspondent for ABC News, based in Washington D.C. and Atlanta. She began her broadcasting career at WGNO, the ABC affiliate in New Orleans, covering Hurricane Katrina and its aftermath. Yunji graduated with honors with a degree in political science from Yale University and holds a Master's Degree in journalism from UC Berkeley. She grew up on the Kona side of Hawaii Island.



**Diana Brown**

Chief People Officer, Servco

As Chief People Officer at Servco, Diana Brown serves as a trusted advisor to the CEO, Board of Directors, and Servco's businesses on strategic people projects. Diana also oversees the company's philanthropic initiatives, including the Servco Foundation and Fukunaga Scholarship Foundation.

Diana specializes in leadership, organization and team dynamics, diversity & inclusion, and is passionate about elevating team and leadership performance. Diana earned her B.S. in Psychology from Virginia Tech and is a certified executive coach.



**Kehau Amorin**

Vice President of HPM Homes and Design Centers, HPM Building Supply

Kehau Amorin, a dynamic executive with over 25 years of experience in sales, business development, and strategic planning, currently serves as the Vice President of HPM Homes and Design Centers. In this role, which she assumed in 2024, Kehau leads the company's strategic initiatives and operational excellence with a people-first approach. Her career journey includes significant positions such as Director of Sales at Hardware Hawaii and Aqua Hotels & Resorts, as well as running her own consulting business. Known for her ability to develop effective business strategies and manage high-performing teams, Kehau has consistently driven growth and innovation across various sectors including local wholesale markets, travel industry, and home improvement.



**Ashley Johnson**

Founder & CEO, Mohala Eyewear

Ashley Mariko Meilan Johnson founded Mohala Eyewear as most U.S. eyewear is designed for a narrow, Eurocentric face, leaving millions of women wearing poor fitting eyewear. Mohala Eyewear is an inclusive eyewear brand that offers three unique nose bridge fits, various widths, and adjustable frames to create custom fitting eyewear for all faces. Each pair sold sends a girl to school at Room to Read and 78,000 days of school have been donated to date. Ashley was a 2023 Obama Leader USA. Mohala Eyewear is available at Nordstrom and mohalaleyewear.com

# Let's Talk Story: Diverse Perspectives in Roundtable Conversations

11:15 A.M. – 12:15 P.M. | SOUTH PACIFIC III-IV

Join us for an intellectually stimulating session that breaks away from the traditional lecture format. Our roundtable discussions session will offer attendees the opportunity to engage in conversations featuring a diverse selection of unique, interesting, and thought-provoking topics. Each table will feature a different topic hosted by a different speaker. Topics vary. Seating is open, first-come, first-serve.

**TABLE 1: BRINGING KAMA'ĀINA HOME: STRENGTHENING OUR ECONOMY AND COMMUNITY THROUGH LOCAL TALENT**



**Nicole Lim**  
DIRECTOR  
MOVERS & SHAKAS

**TABLE 2: AGILE LEADERSHIP: NAVIGATING CHANGE WITH ADAPTABILITY AND INNOVATION**



**Brittany Montilliano**  
SENIOR MANAGER, PATSY T.  
MINK CENTER FOR BUSINESS &  
LEADERSHIP

**TABLE 3: BUILDING A BUSINESS. GROWING A FAMILY: THRIVING IN DUAL ROLES**



**Sara La Torre**  
OWNER & GTM ENGINEER,  
LA TORRE CONSULTING

**TABLE 4: FINDING YOUR CONTRIBUTION & BEING A FORCE FOR GOOD**



**Ashley Kierkiewicz**  
PRESIDENT & CEO, NĀ LEO  
TV AND HAWAII COUNTY  
COUNCIL MEMBER

**TABLE 5: THE MYTH OF HAVING IT ALL: REDEFINING SUCCESS**



**Malia Zannoni**  
MARKETING & SPONSORSHIP  
DIRECTOR, INTERNATIONAL  
MARKETPLACE

**TABLE 6: LEADING WITHIN A HYBRID ENVIRONMENT**



**Wenona Harris**  
SENIOR PARTNER,  
ANTHOLOGY  
FINN PARTNERS

**TABLE 7: PASSIONATE IMPACT: CRAFTING A PURPOSE-DRIVEN CAREER**



**Shayna Doi**  
MARKETING AND  
COMMUNICATIONS MANAGER,  
HAWAII ENERGY



# HDS goes the extra *smile* for your employees.

Led by wāhine, Hawaii Dental Service (HDS) is committed to advancing oral health and access to care in Hawai'i with a deep understanding of the unique needs of women and their 'ohana. It's part of our mission to champion oral health and create a lifetime of healthy smiles for Hawai'i families.

Our diverse local team, rooted in communities across Hawai'i, is here to assist you in selecting the right dental plan, finding the right care, and providing personalized support—with aloha and a smile. Live Well, Smile More, with HDS.

**MICHELLE BANIS**  
Customer Service Representative



**“As wāhine, it is our kuleana** to advance oral health for local families. We examine ways to increase access to care, educate communities across all islands, and ensure Hawai'i's business industry stays healthy year-round.

By championing these efforts, we not only support the well-being of our 'ohana, but empower the next generation to thrive and build a healthier future for all.” - Dr. Diane S.L. Paloma, HDS President and Chief Executive Officer

*Pictured from left to right: Minna Lehti, Chief Operating Officer, Dr. Diane S.L. Paloma, President & Chief Executive Officer, and Elaine Fujiwara, Chief Customer Officer.*

[HawaiiDentalService.com](http://HawaiiDentalService.com)

# Here with you

For 86 years and counting, HMSA has been proud to support Hawaii's wahine in building healthier communities.

Working together, the future is bright.



**hmsa**   
An Independent Licensee of the Blue Cross and Blue Shield Association



# Navigating Ambition: Finding Fulfillment in Your Evolving Career

1:30 - 2:30 P.M. | CORAL I

How do we navigate our changing relationship with ambition over the course of our professional careers? This session tackles the challenges of finding career fulfillment when you feel stuck or uncertain about your next steps. What happens when you reach the professional summit you set your sights on and think, "Is that all there is?" Join us to discuss riding out a mid-life ambition crisis and, in the process, discovering work that aligns with who you are now. Learn strategies to redefine your goals, embrace new opportunities, and find meaningful career satisfaction at any stage of life.



**Ann Teranishi**  
President & CEO,  
American Savings Bank

Ann is the President and CEO of American Savings Bank and a board director. Ann has held various leadership roles at ASB, including EVP of Operations, where she played a key role in the bank's digital transformation. She also developed an enterprise compliance program and led the retail credit and customer experience teams. Ann serves on several boards, including Hawaii Executive Collaborative, Punahou School, U.S.-Japan Council and Catholic Charities of Hawaii Board of Advisors.



**Crystal Rose**  
Founding Partner,  
Lung Rose Voss Wagnild

Crystal is a founding partner of Lung Rose Voss Wagnild whose mission over 38 years has remained constant, steadfast and dedicated to providing result-oriented representation and exceptional client service. As one of Hawai'i's most accomplished and creative business litigation attorneys, Crystal has helped shape Hawai'i's business landscape through her strategic counsel, representing some of the state's largest institutions. Crystal serves on corporate boards for Central Pacific Bank, Hawaiian Airlines, and Gentry Homes, and is a Trustee of Kamehameha Schools. A proud native Hawaiian, she actively supports numerous Native Hawaiian and other non-profit organizations. Crystal has been recognized as a Hawai'i Super Lawyer since 2008, named among America's Top 100 Attorneys, given a Lifetime Achievement Award and honored as Best Lawyer of the Year in Arbitration (2022) and Construction Litigation (2013).



**Mahina Tuteur**  
Founder & CEO, Surf  
Shack Puzzles

Mahina is the Founder & CEO of Surf Shack Puzzles, which collaborates with wahine artists to make fun, beautiful puzzles and is dedicated to sharing aloha one piece at a time. Prior to becoming a small business owner, Mahina worked for nonprofits protecting our natural and cultural resources and taught classes and conducted community legal trainings at the law school. She is pursuing a PhD in Indigenous Politics and is a mom of three.



**Catherine Toth Fox**  
Editor,  
HAWAII Magazine

Catherine Toth Fox is the editor of HAWAII Magazine, a Honolulu-based travel platform. She has more than 20 years of experience as a writer and editor, 10 of those years spent as a reporter at the former Honolulu Advertiser. No stranger to career changes, Catherine has also taught college-level journalism for over 15 years, worked in a flower shop, at summer funs, in catering, in marketing, in retail and even at a telephone answering service, when that was a "thing." She's also a mom of an almost 8-year-old and took care of her mom for two years until she died.

# Leading Through Crisis

1:30 - 2:30 P.M. | SOUTH PACIFIC I-II

In times of crisis, leadership is tested like never before. This session brings together accomplished women leaders who have successfully navigated their organizations through challenging times. From economic downturns and global pandemics to social unrest and industry disruptions, these leaders have faced it all. They will share their insights on crisis management, decision-making under pressure, and the importance of resilience and adaptability. Learn how to lead with courage and conviction, even in the most uncertain circumstances, and leave equipped with strategies to guide your team through any storm.



MODERATOR

**Lynn Miyahira**

VICE PRESIDENT, IQ360

Lynn manages many of the public affairs accounts in Honolulu and advises clients on developing a comprehensive communications strategy. She uses her knowledge of the government, business, and nonprofit landscape to help clients navigate issues in the ESG space. She has worked with clients in public health, energy, entrepreneurship, astronomy, government, education and nonprofits. Lynn specializes in public affairs and crisis communications to help clients address some of the most important issues facing society today. She also has much experience coordinating large-scale, comprehensive public health campaigns. Prior to joining iQ 360, Lynn was the marketing director at the Shidler College of Business at the University of Hawai'i at Mānoa. Lynn sits on the Board of Governors of the East-West Center, is an advisor and past-president of the Hawaii United Okinawa Association and is active in the U.S.-Japan Council.



**Shelee Kimura**  
President & CEO, Hawaiian  
Electric

Shelee Kimura is president and CEO of Hawaiian Electric, the state's largest utility, serving communities on O'ahu, Hawai'i, Maui, Lāna'i and Moloka'i. Before becoming CEO in 2022, Shelee held several senior positions at Hawaiian Electric, including SVP of Customer Service & Public Affairs, SVP of Business Development & Strategic Planning, and leadership roles in Investor Relations, Strategy and Corporate Finance at HEI. Shelee serves on the boards of Alexander & Baldwin, Mid-Pacific Institute, Nā Kama Kai, and Parents and Children Together.



**Keanu Lau Hee**  
Senior Director of Maui  
Recovery, Hawai'i  
Community Foundation

Keanu Lau Hee is the Senior Director of Maui Recovery for the Hawaii Community Foundation. With a robust background in emergency management and land use planning, Keanu has served as Deputy Managing Director for the County of Maui and has been actively involved in critical response efforts. Her expertise is underscored by formal training in emergency management, and she has played a pivotal role in addressing major crises including the 2023 Maui wildfires.



**Amanda Corby-Noguchi**  
President & CEO,  
Under My Umbrella

Amanda founded Under My Umbrella (UMU) Inc., a leading firm in communications, strategy, and event production in 2009. Grounded in a commitment to island consciousness and social connectedness, UMU amplifies client initiatives through Amanda's talent for storytelling and precise insight. Through collaborative efforts across diverse sectors, she strategically fosters trust-based relationships, cultivating messaging that resonates while leveraging data-driven analysis. In addition to her agency work, Amanda co-founded Chef Hui, a nonprofit dedicated to rebuilding a more equitable food system. From grassroots beginnings, Chef Hui has evolved into a reputable statewide organization, raising over \$3.5 million to support community efforts since 2020.

# Cultivating Thought Partners: Transforming Employees into Innovators

1:30 - 2:30 P.M. | SOUTH PACIFIC III-IV

Transforming employees into thought partners is key to fostering a culture of creativity and ownership. This session explores how to build an environment that encourages innovative thinking and genuine investment in your business. Learn practical strategies for empowering and incentivizing your team, creating a structure that nurtures creative contributions and respects their input. Discover how to find and develop employees who think about your business as their own, and the benefits of treating them as partners in your success.



**MODERATOR**

**Jennifer Tanabe**  
CREATIVE DIRECTOR, ALTRES

Jennifer Tanabe is Creative Director at ALTRES, Hawaii's leading human resource and staffing company. With 25 years of design and advertising industry experience, Jen has helped to launch and cultivate award-winning brands for clients such as Kaiser Permanente, McDonald's, Hawaiian Telcom, Starwood Hotels and Resorts, Hawaii National Bank, and The Surfjack Hotel and Swim Club. She is passionate about helping organizations flourish through strategic audience-centric thinking and innovative creative problem solving.



**Stacy Kealohalani Ferreira**  
CEO, Office of  
Hawaiian Affairs

Stacy Kealohalani Ferreira is OHA's Chief Executive Officer starting in the position on Nov. 1, 2023. Since 2019, she has served as budget chief of the Hawai'i State Senate and is a former executive strategy consultant and division director of Extension Educational Services for Kamehameha Schools. Her priorities are achieving the goals of OHA's Mana i Maui Ola strategic plan and working to increase the agency's trust assets and portfolio performance.



**Makana McClellan**  
Director of Communications,  
Office of the Governor,  
State of Hawai'i

Makana McClellan is the director of communications for Governor Josh Green, M.D. Prior to that, she was the director of business development and community relations as well as the director of marketing at Shriners Children's Hawai'i and spent about 10 years serving as the public information officer at The Queen's Health Systems. She is a dedicated community volunteer, having served in leadership roles within various organizations like the Aloha Festivals, the Association of Hawaiian Civic Clubs and the Portuguese Chamber of Commerce, served as a Commissioner for FestPAC 2024, and is currently a member of the Hawai'i Board of Education. McClellan was recognized by Pacific Business News as an influential woman in the Hawaii business community through their Women Who Mean Business award.



**Robin Kobayashi**  
Senior VP of Human  
Resources,  
Hawaiian Airlines

Robin Kobayashi was appointed as Hawaiian Airlines' senior vice president of human resources in August 2019. Kobayashi leads Hawaiian's employment strategy, recruitment efforts, and the administration of benefits, recognition programs, talent management and labor relations for the airline's workforce.

Kobayashi, who brings two decades of legal experience to her new post, previously served as Hawaiian's managing director and associate general counsel of labor and employment. Throughout her tenure, she successfully oversaw the company's labor and employment efforts related to the Office of Federal Compliance Programs, equal employment opportunity, and privacy. Kobayashi has also served as the executive director of the Hawaii Immigrant Justice Center and was a staff attorney on the National Labor Relations Board in Washington D.C. Born and raised on O'ahu, Kobayashi earned a Juris Doctor from the University of Washington and a bachelor's degree in English literature from the University of Hawai'i.



# The khon<sup>2</sup> News at 7PM on KHII



Brigette Namata



Gina Mangieri

Hawaii's only news at 7PM  
Monday- Friday on KHII

khon<sup>2</sup> WORKING FOR HAWAII





A health insurer driven by *mālama*.

Born of this community, we see  
the beauty of *mālama* – caring deeply.  
It's a lesson we learned from you.

[uhahealth.com](https://uhahealth.com)



# Grace, Grit, and Tradition

2:45 - 4:00 P.M. | CORAL III-V

Talk Story and Performance by the Miss Aloha Hula honorees from 2021-2024



MODERATOR

**Mālia Ka'aihue**

FOUNDER & PRESIDENT, DTL HAWAII

Mālia Ka'aihue is a highly recognized entrepreneur and an award-winning author who is deeply involved with Hawaiian culture and Hawai'i's community. Mālia is the founder of DTL Hawai'i, Aloha Modern, 'Āina Archaeology, Kūmau Productions, Nā Kama Kai, Actions of Aloha and OLA Hawai'i. Waiohinu is her kulaiwi, Hilo is her onehānau, and she lives in Mākaha with her kāne Duane DeSoto, on the block he grew up on, with their eight children and one mo'opuna. Over the last several years, Mālia has received numerous business and leadership awards, including being named a 20 for the Next 20 by Hawaii Business Magazine in 2019.



**Ka'ōnohi Lopes**

**Ka Lā 'Ōnohi Mai O Ha'eha'e (2024)**

Ka'ōnohi Lopes, a resident of Pū'ahu'ula, Ko'olaupoko, O'ahu, is the second daughter of Robert Keawe Lopes Jr. and Tracie Ka'ōnohilani Lopes. With the impression of both her parents in learning 'ōlelo Hawai'i and her education in Hawaiian immersion schooling, she became fluent in the language. In the same manner, the importance of mele and hula was impressed on Ka'ōnohi and her sisters from a very young age. She is an 'ōlapa of Ka Lā 'Ōnohi mai o Ha'eha'e under the direction of her parents, Tracie and Keawe Lopes. After training for many competitions both as a keiki and wahine, she now holds the prestigious title of Miss Aloha Hula 2024. Ka'ōnohi is a proud graduate of Kamehameha Schools Kapālama class of 2020. After which, Lopes attended the University of Hawai'i at Mānoa where she earned her Bachelor's Degree in Hawaiian language under Kawaihuelani: Center for Hawaiian Language in Spring of 2023. She is now a second-year Graduate Student in the Communications Program at UH Mānoa where she will receive her degree in Spring 2025. Lopes is a Graduate Assistant for Hawai'i inuiākea: School for Hawaiian Knowledge where she tutors Hawaiian language majors and others in the community seeking support in their language learning journey.



**Agnes Brow**

**Ka Lā 'Ōnohi Mai O Ha'eha'e (2023)**

Agnes Brown was born and raised in Kāne'ohe, O'ahu. She graduated from Sacred Hearts Academy in 2019 and earned her Bachelor's Degree in Elementary Education with a Minor in Psychology from Chaminade University of Honolulu in 2023. Brown continues her passion for volleyball after playing throughout her elementary and high school years as the Head of the Volleyball Program at Sacred Hearts Academy, where she also teaches Choir to 7-12th graders. Her greatest passion however is hula. She has danced for her Aunt and Uncle, Kumu Tracie and Kumu Keawe Lopes and Ka Lā 'Ōnohi Mai o Ha'eha'e for 15 years. In 2023, she competed in the prestigious solo competition of the Merrie Monarch Festival and was honored with the title of Miss Aloha Hula. Hula, volleyball and Catholic education have become the foundation for her life and for her success.



**Pi'ikea Lope**

**Ka Lā 'Ōnohi Mai O Ha'eha'e (2022)**

Pi'ikea Lopes is the eldest daughter of Keawe and Tracie Lopes and resides in Pū'ahu'ula, Ko'olaupoko, O'ahu. Rooted in mele, hula and 'ōlelo Hawai'i, she graduated with her Bachelors in Hawaiian Language (2021) and a Masters in Education (2023) from the University of Hawai'i at Mānoa. In April 2022, she won the coveted title of Miss Aloha Hula at the Merrie Monarch Festival in Hilo under the direction of her Kumu hula Keawe and Tracie Lopes of Ka Lā 'Ōnohi Mai o Ha'eha'e. Later that same year she was featured as "The new face of NIKE N7 Indigenous Collection", a Kanaka 'Ōiwi portraying the art of hula appropriately on billboards in New York and Los Angeles. She is a 2 time state record holder in powerlifting and is focused on the importance of physical well being in her everyday life. Today, she is currently a lecturer at the University of Hawai'i at Mānoa.



**Ka'imilei Keamoai-Strickland**

**Ka Lā 'Ōnohi Mai O Ha'eha'e (2021)**

Ano 'ai me ke aloha! Ka'imilei Keamoai-Strickland grew up in Hanapēpē, Kaua'i. She was raised by the community of 'ohana Ni'ihau where her maternal lineage originates. Ka'imilei was a student at Ke Kula Ni'ihau o Kekaha, a Hawaiian Immersion Charter School on Kaua'i's westside. She was blessed to be accepted into Kamehameha Schools Kapālama in the 7th grade and that is when she made her journey here to O'ahu. Upon graduation, Ka'imilei started her higher education journey at the University of Hawai'i at Mānoa. Under the guidance of Kawaihuelani Center for Hawaiian Language, Ka'imilei now has a B.A. in Hawaiian Language and is currently pursuing her Master's of Education in Teaching for Elementary and Hawaiian Immersion Education. Ka'imilei now resides in the 'āina kaikua of Waimānalo. Ka'imilei is in her first year as a Kumu Kula Ha'aha'a (Elementary Teacher) at Ke Kula Kaiapuni o Waimānalo. Ka'imilei is a Hula 'Ōlapa of Ka Lā 'Ōnohi Mai o Ha'eha'e, under the direction and guidance of Kumu Tracie and Kumu Keawe Lopes. By their grace and encouragement, she has participated in 6 Merrie Monarch Festivals and it has been Ka'imilei's greatest honor to have and hold the title of Miss Aloha Hula 2021.



# Explore Experience & Imagine at the Wahine Lounge

Explore the latest furniture styles, meet our CEI team and unlock the possibilities. We're proud to be the official sponsor of the Wahine Lounge.



**CEI Hawaii**

modern workplace  
environments

[www.ceihawaii.com](http://www.ceihawaii.com)



Aloha Gas Sign Refresh



Dior Construction Barricade



Radford Football Lockerroom

**JPG**  **WE DO BIGGER BETTER**

## SIGNS

Store Fronts  
Lit Signs  
Wayfinding Signs  
Dimensional Signs

## DISPLAYS

Tradeshow Displays  
Step and Repeat  
Custom Tents  
Vinyl Banners

## WRAPS



Barricades  
Walls and Windows  
Fleet Graphics  
Structure Graphics



Yeti Store Barricade



Custom 20ft Tent Package



Sea Life Park Bus Wrap

# Mahalo to Our Sponsors and Partners!

PRESENTED BY:



**THE QUEEN'S  
HEALTH SYSTEMS**  
Your Lifetime Partner in Health

HAWAII  
KAUAI  
MAUI  
MOLOKAI  
O'AHU

SPECIAL PARTNERS:



eliminating racism  
empowering women  
**ywca**  
O'ahu

PATSY T. MINK  
CENTER FOR  
BUSINESS &  
LEADERSHIP

EXCLUSIVE BANKING PARTNER:



**AMERICAN**  
Savings Bank

CEO ROUNDTABLE SPONSOR:



WAHINE LOUNGE PARTNER:



CEI Hawaii  
modern workplace  
environments

GOLD SPONSORS:



SILVER SPONSOR:



PRINT PARTNER:



HOTEL SPONSOR:

